

EL DORADO UNION HIGH SCHOOL DISTRICT

4675 Missouri Flat Rd.
Placerville, CA 95667-6816
Phone: (530) 622-5081

Superintendent: Dr. Ron Carruth

SchoolWorks, Inc.

8700 Auburn Folsom Rd, 200
Granite Bay, CA 95746

Phone: 916-733-0402
www.SchoolWorksGIS.com

2022/23 DEMOGRAPHICS AND ENROLLMENT PROJECTIONS

NOVEMBER 2022

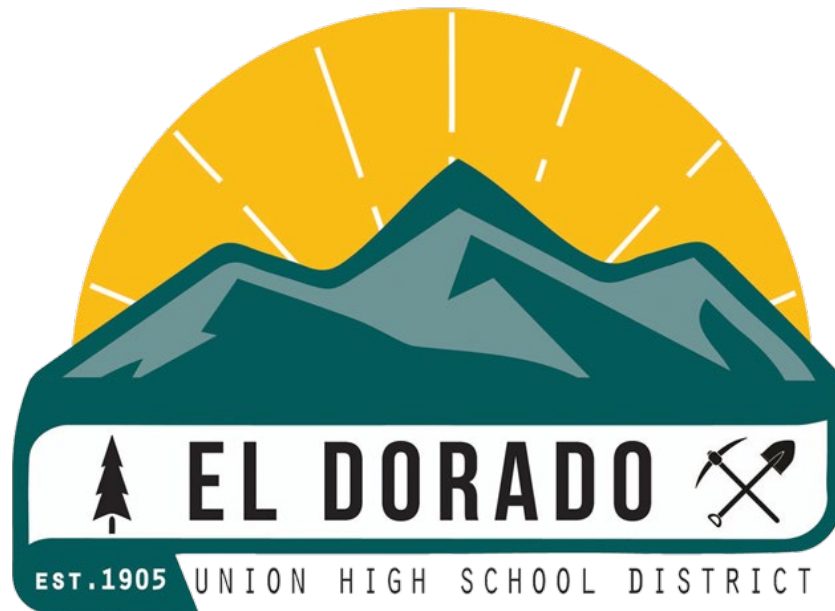


TABLE OF CONTENTS

	Page
EXECUTIVE SUMMARY	1
INTRODUCTION.....	3
METHODOLOGY	4
DISTRICT BOUNDARIES.....	6
NEW HOUSING DEVELOPMENTS	10
CLASSROOM COUNTS AND CAPACITY	12
SCHOOL PROJECTIONS	13
SCHOOL FACILITY UTILIZATION.....	32

CHARTS

	Page
10 YEAR ENROLLMENT HISTORY AND 6 YEAR ENROLLMENT PROJECTIONS	2
CURRENT ENROLLMENT BY GRADE	8
HISTORICAL ENROLLMENT AND COHORTS.....	9
STUDENT YIELD RATE ANALYSIS	10
NEW DEVELOPMENT PROJECTIONS.....	11
NEW DEVELOPMENT CONSTRUCTION	11
LOADING STANDARDS.....	13
LOADING STANDARDS ANALYSIS.....	13
CAPACITY & PROJECTED ENROLLMENT	
EL DORADO HIGH	15
OAK RIDGE HIGH	17
PONDEROSA HIGH.....	19
UNION MINE HIGH	21
INDEPENDENCE HIGH	23
PACIFIC CREST ACADEMY	25
NPS	26
STUDENT ATTENDANCE MATRIX	27
STUDENT RESIDENTS & ENROLLMENT	28
10 YEAR ENROLLMENT HISTORY & 6 YEAR ENROLLMENT PROJECTION	29
ENROLLMENT PROJECTION SUMMARY BY GRADE	30
ENROLLMENT PROJECTION SUMMARY BY SCHOOL	30
ENROLLMENT PROJECTIONS.....	31
SCHOOL FACILITY UTILIZATION.....	32

MAPS

	Page
DISTRICT MAP WITH STUDENT RESIDENTIAL LOCATIONS.....	6
HIGH SCHOOL BOUNDARIES AND SCHOOL LOCATIONS.....	7
NEW HOUSING DEVELOPMENTS	10
SCHOOL BOUNDARY MAPS	
EL DORADO HIGH	14
OAK RIDGE HIGH	16
PONDEROSA HIGH.....	18
UNION MINE HIGH	20
INDEPENDENCE HIGH	22
PACIFIC CREST ACADEMY	24
SCHOOL FACILITY UTILIZATION –HIGH SCHOOLS.....	33

El Dorado Union High School District

2022/23 Demographics and Enrollment Projections

EXECUTIVE SUMMARY

Located in the Sierra Nevada foothills between Sacramento and South Lake Tahoe, the District encompasses 1,250 square miles, including a large portion of El Dorado County's historic Gold Rush region. The area includes about 40 communities along U.S. Highway 50 corridor that span the county from Kyburz and Pollock Pines in the east to Latrobe and El Dorado Hills in the west.

El Dorado Union High School District consists of four comprehensive high schools, three alternative schools, one charter school, one community day school, and one Career Technical Education (CTE) program, which includes a Regional Occupational Program (ROP). El Dorado Union High School District has experienced a mostly stable enrollment over the past ten years from an enrollment of 6,847 students during the 2013/14 school year to the current enrollment of 6,719 students.

Last year's Demographics and Enrollment Projections Study projected an enrollment of 6,853 students. The actual enrollment this year is down by 134 students compared to the projection.

El Dorado Union High School District is projected to decline in enrollment by 2.57% (or 173 students) for the 2023/24 school year. The District is projected to have a declining enrollment over the next six years, with a projected 6,196 students in the 2028/29 school year. This is a total loss of 523 students, which is a decrease of 7.78%.

Future impacts from new housing development is predicated upon information provided by local municipalities on the development of 1,702 housing units over the next six years. If the building rates increase or decrease, then the timeline shown in this Study will need to be modified accordingly. These projected new developments in the District's boundary are expected to generate 26 students next year, or a total of 208 students in the next six years.

Based on current District loading standards and classroom space, the District has a net classroom capacity of 8,416 students, and a current enrollment of 6,719. This gives the District a current utilization factor of 79.8%. The projected utilization factor in six years will be 73.6%. This assumes loading standards remain constant and no additional facilities are built or removed.

These projections assume the transfers between schools remain consistent. If changes in facilities, schedules, programs or policies are made, then the patterns may be impacted.

El Dorado Union High School District

2022/23 Demographics and Enrollment Projections

Ten Year Enrollment History and Six Year Enrollment Projections

This graph shows a summary of the projections for the entire District. It shows the current enrollment for 2022/23, the historic enrollment for the past nine years, and the projected enrollment for the next six years. The end result is a total of 6,196 students in the District in 2028/29.



The El Dorado Union High School District has experienced a mostly stable enrollment over the past ten years from an enrollment of 6,847 in 2013/14 to the current enrollment of 6,719.

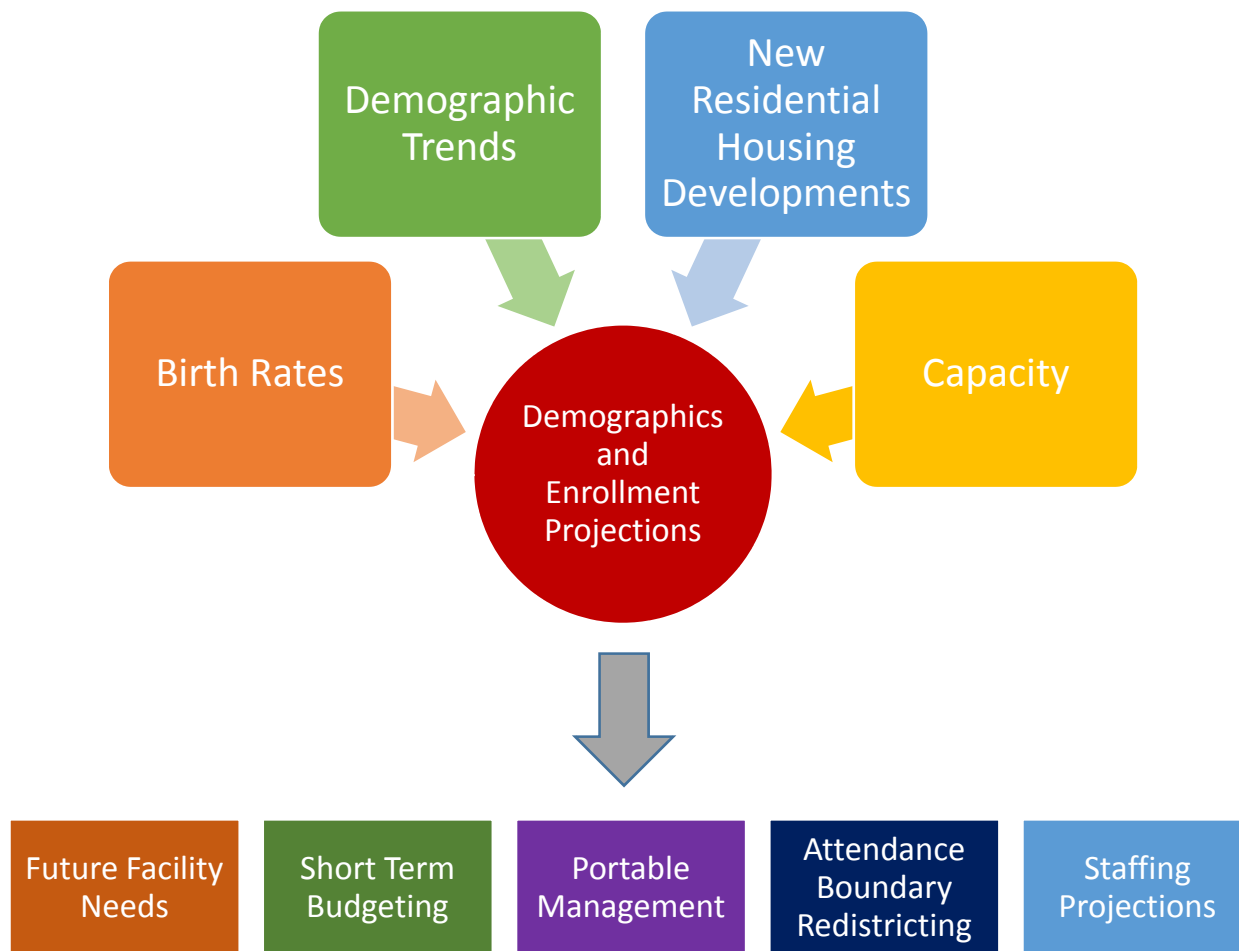
This graph is color coded by grade groupings:

Blue represents the historic and projected enrollment for high school grades 9-12.

The entire District enrollment is shown at the top of each bar.

INTRODUCTION

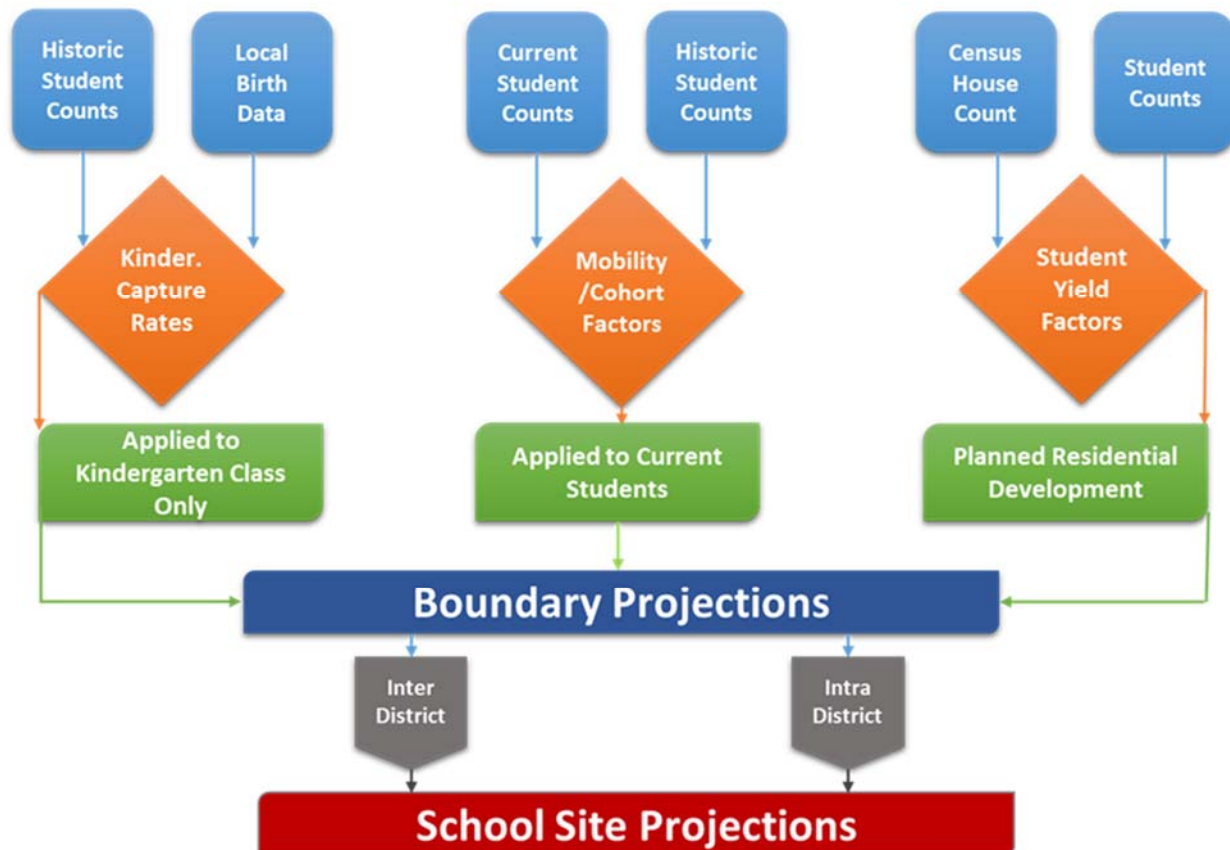
This Demographics and Enrollment Projections Study provides a comprehensive enrollment analysis for the El Dorado Union High School District. The district-wide and school-specific enrollment projections are meant to serve as a planning tool to help with both long- and short-term planning. Demographic Studies examine the factors that influence school enrollments, namely trends in demographics, birth rates, and housing development. They are also used as a tool to identify certain facility planning requirements such as capacity, utilization of existing facilities, planning for modernization or new construction, and attendance boundary redistricting.



This Study provides information based on the 2022/23 District enrollments and programs, local planning policies and residential development. As these factors change and timelines are adjusted, the Demographic and Enrollment Projections Study should be revised to reflect the most current information.

METHODOLOGY

The chart below summarizes the inputs to calculate the boundary and school site projections.



The **enrollment projections** for each school are generated using a State standard non-weighted cohort trend analysis. The basic projections are created by studying the individual geographic areas. Once the trends are analyzed for each area, the base projections are modified using the following procedures:

- a) **New Housing Development** rates and **yield rates** are compared to the historical impact of development, and if the future projections exceed the historical values, the projections are augmented accordingly.
- b) **Inter-District student** counts are not included in the base geographic trend analysis since these students reside outside of the District. Therefore, the current number of students-per-school and students-per-grade are added to the base projections.
- c) **Intra-District students** are those who transfer from one school to another. The number of students transferring into and out of each school are calculated and used to determine the difference between the projections for students living in each attendance area versus those that are projected to attend the school.

El Dorado Union High School District

2022/23 Demographics and Enrollment Projections

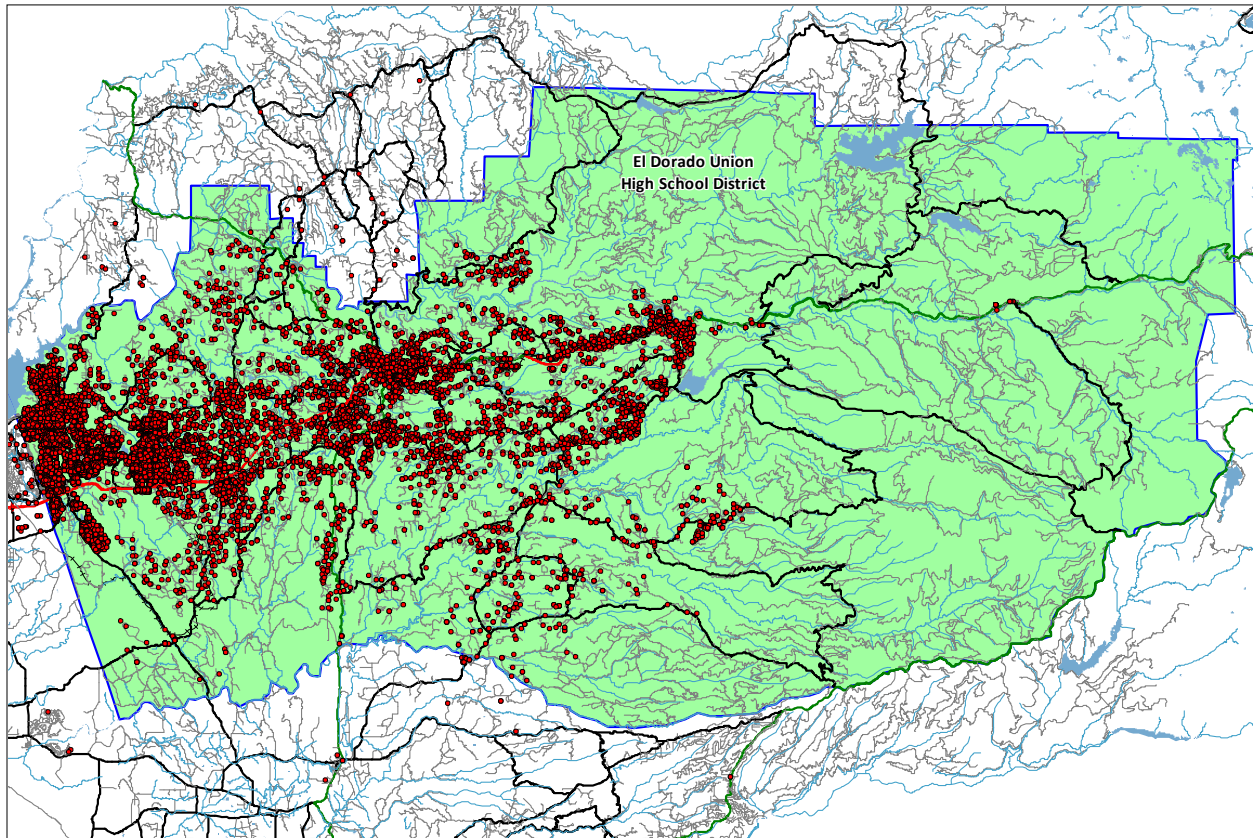
- d) The projections for **special education students** and **alternative programs** are created by assuming those programs typically serve a percentage of the total District population. Therefore, as the District grows or declines, the enrollment in those programs would increase or decrease accordingly.

- e) **Cohort Trend Analysis:** The number of students living in the boundary are used to generate the cohort factors. The non-weighted average of the three years was determined with each year weighted 33.3%. This reduces the current trends compared to the weighted model. This was done due to the impacts of the pandemic which should be a short-term adjustment. Those cohorts are then used to determine the students who will be residing in each attendance area for the following years.

Neighborhood School Attendance Area Analysis: Each school attendance boundary is input into our GIS (Geographic Information Systems) Software. Students are counted in each of the attendance area boundaries based on their residential address and can be studied to view optimum and balanced utilizations. Attendance pattern maps for each individual boundary will analyze impacts of intra-district transfers from within the district boundary, as well as inter-district transfers from neighboring school districts.

DISTRICT BOUNDARIES

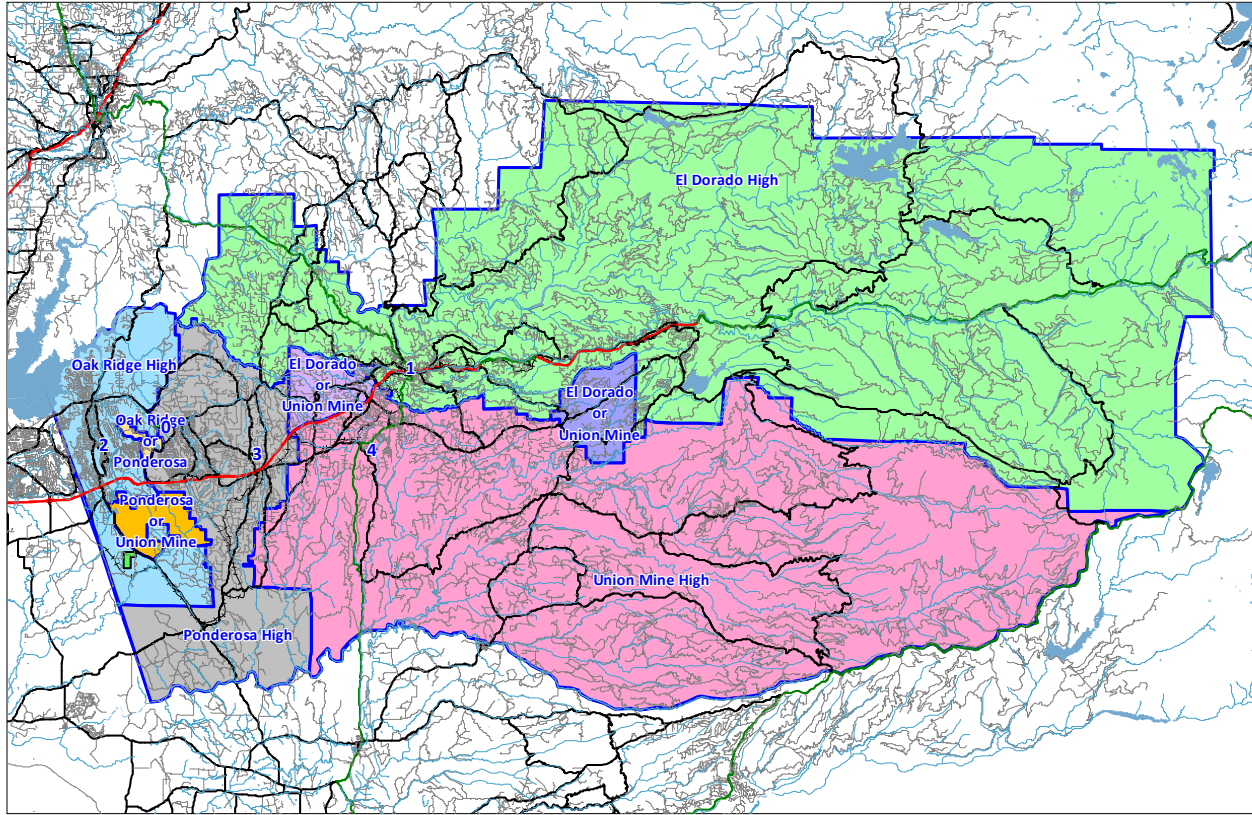
District Map with Student Residential Locations



This map shows the District boundary along with the location of each student based on their residential address. This geographic data is the foundation for our demographic analysis. Any red dots outside the District boundary will represent students attending one of the District schools or programs but have a residence outside the District. This map also identifies different areas of student population density.

El Dorado Union High School District 2022/23 Demographics and Enrollment Projections

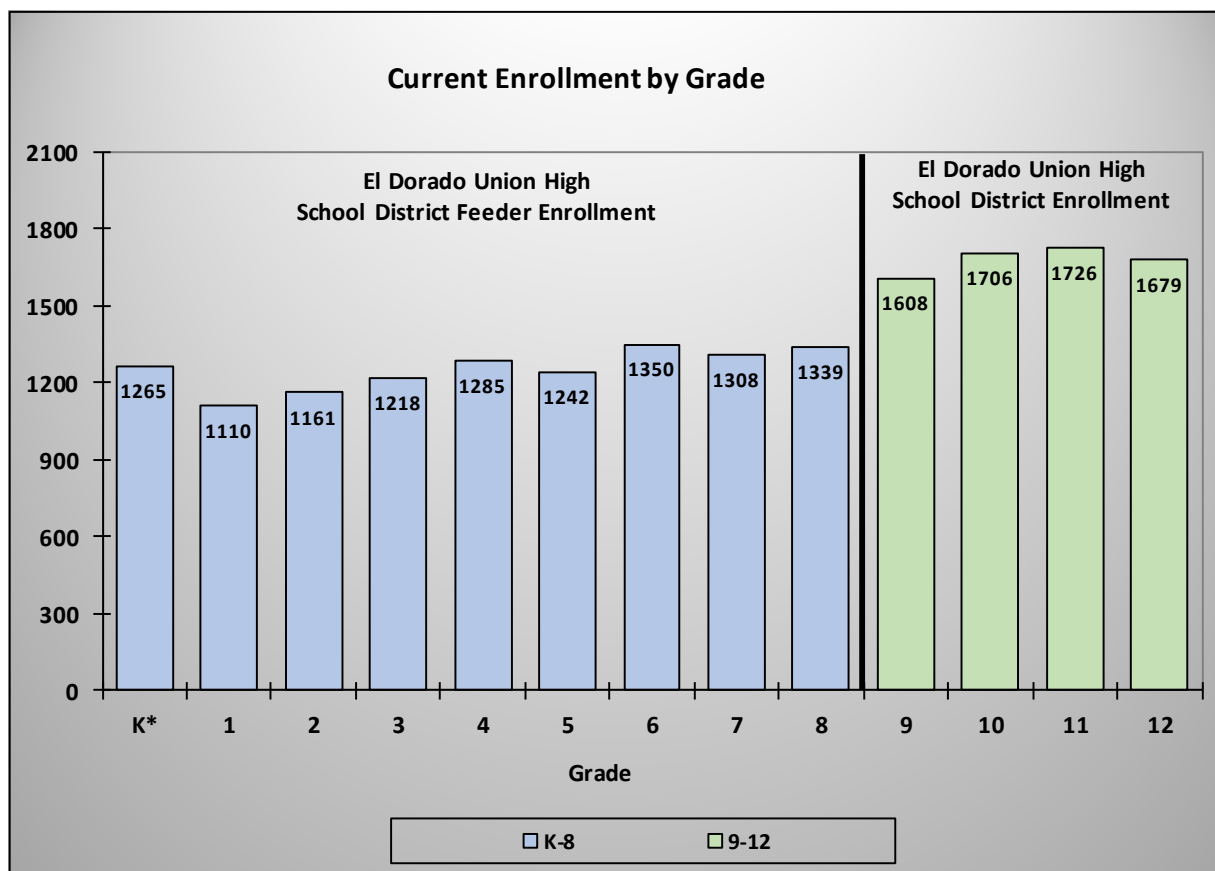
High School Boundaries and Comprehensive High School Locations



<u>Id</u>	<u>School</u>	<u>Grades</u>	<u>Id</u>	<u>School</u>	<u>Grades</u>
1	El Dorado High	9-12	3	Ponderosa High	9-12
2	Oak Ridge High	9-12	4	Union Mine High	9-12

El Dorado Union High School District
 2022/23 Demographics and Enrollment Projections

Current Enrollment Analysis



*Kindergarten enrollment includes Transitional Kindergarten students

This chart illustrates the October 2022 enrollment by grade level for El Dorado Union High School District and the combined enrollment of the feeder school districts. The chart provides insight on how future class sizes may affect the overall enrollment at El Dorado Union High School District. For example, the current graduating class of 12th graders is larger than the incoming 9th grade class in 2023. When analyzing the feeder enrollment, the 5th grade class is currently smaller than the 6th grade class. This could create a decrease in enrollment once that works its way into high school in 4 years. This chart is meant to visually represent the enrollment numbers as of today and do not consider other factors such as new housing development, private and charter school impacts or changes in transfer trends.

El Dorado Union High School District

2022/23 Demographics and Enrollment Projections

Historic Enrollment and Trends

El Dorado Union High School District								
Historic Enrollment and Cohorts								
Grade	CalPADS Enrollment				Historic Cohorts			Weighted Average
	19/20	20/21	21/22	22/23	19 to 20	20 to 21	21 to 22	
9	1,714	1,747	1,732	1,608				
10	1,707	1,660	1,778	1,706	-54	31	-26	-11.7
11	1,659	1,654	1,669	1,726	-53	9	-52	-31.8
12	1,562	1,575	1,720	1,679	-84	66	10	13.0
ISP	164	225	0	0	61	-225	0	-64.8
Totals	6,806	6,861	6,899	6,719	-26.0	-23.8	-13.6	-19.1
Annual Change:		55	38	-180				

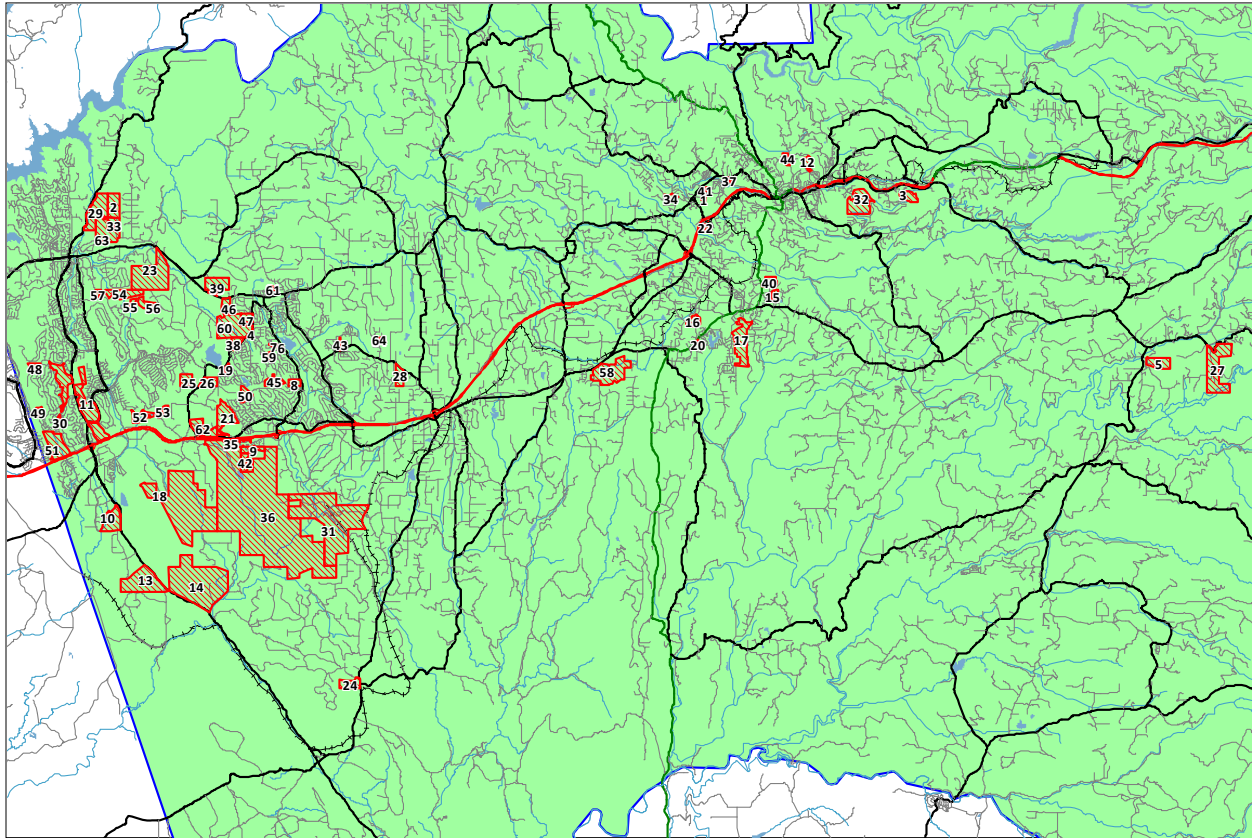
This chart shows the enrollment by grade level over the past four years. The cohort values were calculated for each grade and each year, along with the weighted average for each grade. A positive cohort value indicates that grade is expected to have more students than the previous grade last year. A negative value would mean that the grade has fewer students compared to the previous grade last year.

In general, a positive cohort is representative of growth and a negative cohort indicates a decline in enrollment. There are some exceptions. First grade usually has a positive cohort, as there are some students that do not attend kindergarten at public schools but arrive in first grade.

Another important item to notice is the current breakdown by grade level of the student population. Comparing the number of students in the lower grades to the upper grades can indicate potential increases or decreases in future enrollments. Also, if there is a large class or a small class, it will slowly cause a ripple in the enrollments as it advances a grade each year.

Finally, the annual change at the bottom of this chart indicates the net impact of the changes in enrollment over the past few years.

NEW HOUSING DEVELOPMENTS



This close up view of the District shows the location of the projected new development areas.

The City and County Planning Departments within the school district’s boundary were contacted for input on new housing developments. Two years of building permits were geocoded by address or APN to show the locations of active new developments.

To determine the impact of the new housing development, each new housing unit is multiplied by the student yield rate. Currently the District student yield rate is 0.122 students per housing unit. This breaks down as follows:

El Dorado Union High School District			
Student Yield Rate Analysis			
Grade	2020 Students in District	2020 Housing Units	Student Yield Rate
Total 9-12	6,861	56,027	0.122
Total	6,861		0.122

Based on 2020 Census Data for school district.

The yield rate used for new construction eligibility determination in the State building program is 0.20 students per home for 9-12 districts. The yield rate in the El Dorado Union High School District is lower than the State average.

El Dorado Union High School District

2022/23 Demographics and Enrollment Projections

The projections used in this report are based on the following number of units projected from these developments:

ID	Name	Remaining	Six Year	Boundary	ID	Name	Remaining	Six Year	Boundary
		Units	Projection				Units	Projection	
1	212 Armory Drive	6	83	El Dorado	34	Mallard Apartments	72	72	El Dorado/Union Mine
2	Alto LLC	23	0	Oak Ridge	35	Marble Valley Ridge Estates	3	1	Ponderosa
3	Astoria (Placerville Estates)	39	39	El Dorado	36	Marble Valley SP	3,236	48	Ponderosa/Union Mine
4	Bass Lake Estates	36	12	Ponderosa	37	Middletown Apartments	82	82	El Dorado
5	Blackhawk Estates	9	3	Union Mine	38	Oak View Estates	24	0	Ponderosa
6	Cambridge Road Townhomes	12	12	Ponderosa	39	Oakhaven	29	29	Ponderosa
7	Cameron Heights	25	25	Ponderosa	40	Piedmont Oak Estates	75	10	Union Mine
8	Cameron Hills	41	0	Ponderosa	41	Placerville Heritage Homes	20	0	El Dorado
9	Campobello	45	0	Ponderosa	42	Porter Subdivision	54	0	Ponderosa/Union Mine
10	Carson Creek Village	700	72	Oak Ridge	43	Portico Estates	15	5	Ponderosa
11	Central EDHSP	737	48	Oak Ridge	44	Quartz Mountain	22	12	El Dorado
12	Cottonwood Park Phase 4&6	39	39	El Dorado	45	Rancho Tierra	83	40	Ponderosa
13	Creekside Village	900	72	Oak Ridge	46	Revere	28	28	Ponderosa
14	Deer Creek Estates	121	0	Ponderosa/Union Mine	47	Richland	84	40	Ponderosa
15	Diamond Springs Village Apts	81	81	Union Mine	48	Ridgeview	44	44	Oak Ridge
16	Diamond View Estates	26	0	Union Mine	49	Ridgeview West	8	8	Oak Ridge
17	Dorado Oaks	382	24	Union Mine	50	Sapphire Cliff at Bass Lake Hills	20	20	Ponderosa
18	East Ridge	701	48	Ponderosa/Union Mine	51	Saratoga Estates	181	181	Oak Ridge
19	Edgelake at Serrano	45	45	Oak Ridge/Ponderosa	52	Serrano Village A-14	51	51	Oak Ridge
20	El Dorado Haven Apts	65	65	Union Mine	53	Serrano Village C2	25	5	Oak Ridge
21	Emerald Peak at Bass Lake Hills	55	55	Ponderosa	54	Serrano Village M2	48	0	Oak Ridge
22	Forni Rd	34	0	Union Mine	55	Serrano Village M3	28	28	Oak Ridge/Ponderosa
23	Generations at Green Valley	379	72	Oak Ridge	56	Serrano Village M4	38	0	Oak Ridge/Ponderosa
24	Hansen Project	4	0	Ponderosa	57	Serrano Village M5	10	0	Oak Ridge
25	Hawk View at Bass Lake Hills	13	13	Oak Ridge/Ponderosa	58	Shinn Ranch Development	141	24	Union Mine
26	Hidden Ridge	90	90	Ponderosa	59	Sierra Sunrise	28	20	Ponderosa
27	Hutton Hills Estates Preliminary	35	0	El Dorado/Union Mine	60	Silver Springs	181	0	Ponderosa
28	La Caille Estates	24	0	Ponderosa	61	Starbuck Ranch	49	0	Ponderosa
29	La Canada	47	0	Oak Ridge	62	Town & Country Village	1,027	0	Ponderosa
30	La Cresta Woods	25	25	Oak Ridge	63	Vineyards at El Dorado Hills	42	30	Oak Ridge
31	Lime Rock Valley Specific Plan	800	0	Ponderosa	64	Vista Grande Estate	5	1	Ponderosa
32	Lumsden Ranch	366	0	El Dorado					
33	Malcolm Dixon Road Estates	7	0	Oak Ridge					
					Totals		11,665	1,702	

Assuming that 1,702 of the 11,665 planned units are completed over a six year period, there would be an average of 284 new housing units per year.

El Dorado Union High School District							
New Development Construction							
Housing Units per Year							
	23/24	24/25	25/26	26/27	27/28	28/29	Totals
School	Year 1	Year 2	Year 3	Year 4	Year 5	Year 6	
El Dorado High	2	2	87	87	51	62	291
Oak Ridge High	111	117	71	103	138	135	675
Ponderosa High	101	74	55	27	98	118	473
Union Mine High	0	0	58	59	42	104	263
High Totals	214	193	271	276	329	419	1,702

Based on these estimated construction rates, the development will generate 26 students next year and a total of 208 students in the next six years.

CLASSROOM COUNTS AND CAPACITY

It is important to understand that capacity and classroom counts may be viewed different ways for different purposes. The State School Facilities Program (SFP) considers all available teaching stations excluding physical education facilities and core facilities (e.g., libraries, multipurpose rooms, and administrative spaces), as part of the site capacity when calculating eligibility for new construction or modernization funding. The State also has its own loading standards per classroom as part of the eligibility determinations.

Another method for calculating capacity and number of classrooms is based on local District standards of class size and a definition of what is considered a full day teaching station. The District may set aside several classroom spaces defined by the SFP for specialized programs or pull-out spaces.

The classroom counts and capacities defined in this Demographics and Enrollment Projections Study represent the rooms that have been identified by El Dorado Union High School District administration as designated fulltime teaching stations. This count is a net count and may not take into consideration other rooms which could be used as fulltime teaching stations but are needed for other programs offered by the District.

The classroom counts are shown for each school and are used to determine the capacity. The classroom counts represent the rooms that can be used for teaching purposes at each school site. The classroom counts may not represent the current classrooms being used, as there may be unused rooms on the school site. In some cases, there may be fewer classrooms counted than current teaching stations if some of the rooms being used were designed for other purposes but are currently being used as classrooms due to overcrowding.

SCHOOL PROJECTIONS

This Study provides a detailed analysis of student attendance patterns and enrollment for each school. This includes a boundary map illustrating that particular school’s attendance patterns along with a chart showing the projected enrollment for the next six years. These charts indicate the actual enrollment at each school over the past four years along with the projected enrollment for the next six years. In addition, the number of students living in the boundary are shown for the same time period. If there are more students attending than live in the area, then there is a net inflow. If more students live in the boundary than attend the school, then there is a net outflow.

The current capacity is shown on these charts to identify if there will be classroom space available for the students. If space is not available, then the attendance patterns will likely need to change if the additional facilities are not provided. The capacity for each school was determined by using the following loading standards for each classroom identified:

<u>Grade</u>	<u>Loading Standard</u>	<u>Grade</u>	<u>Loading Standard</u>
9-12	27.5	SVA	22
CHS	25	CDC	12

These loading standards are based on the current loading factors used this year and may change based on the level of funding for schools in the future.

Loading Standard Analysis

<u>School year(s)</u>	<u>Student/teacher ratio</u>	<u>Class load factor</u>	<u>Class load %</u>	<u>Leeway factor</u>
Pre 2008/09	30 to 1	27 to 1	90%	10%
2008/09-2012/13	32 to 1	27 to 1	84%	16%
2013/14*	31.57	27.5 to 1	87%	13%

*Formula to determine class load factor based on student/teacher ratio:
 Student/teacher ratio times class load percentage equals class load factor (31.57 X 87% = 27.5)

Detailed data is provided below each projection chart that shows the calculations of the cohort factors used to determine the enrollment projections for each school.

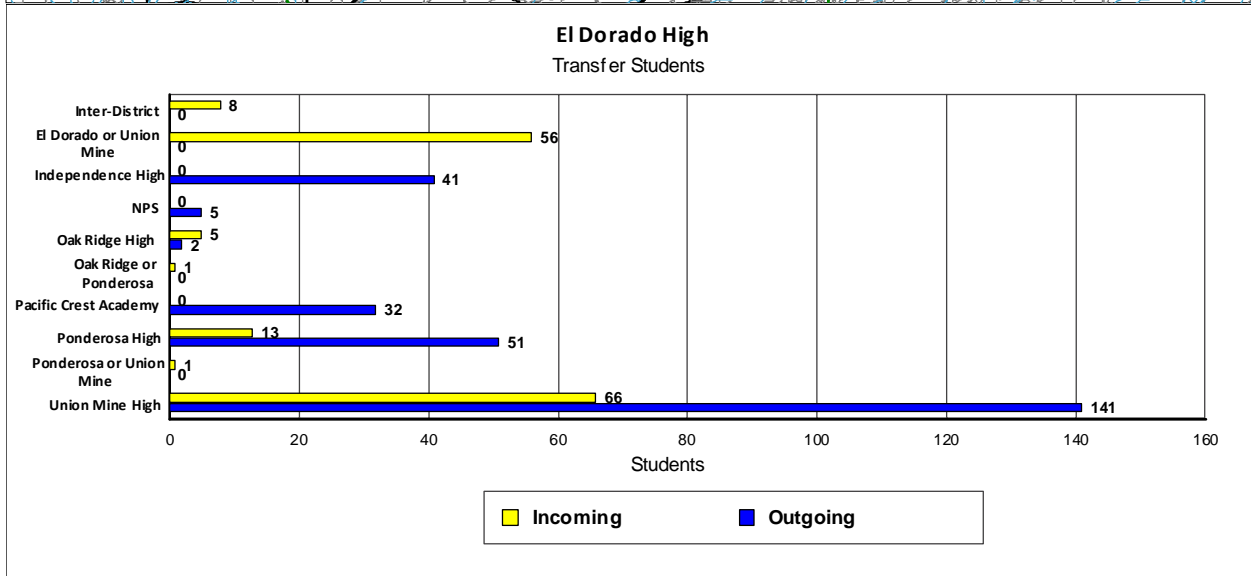
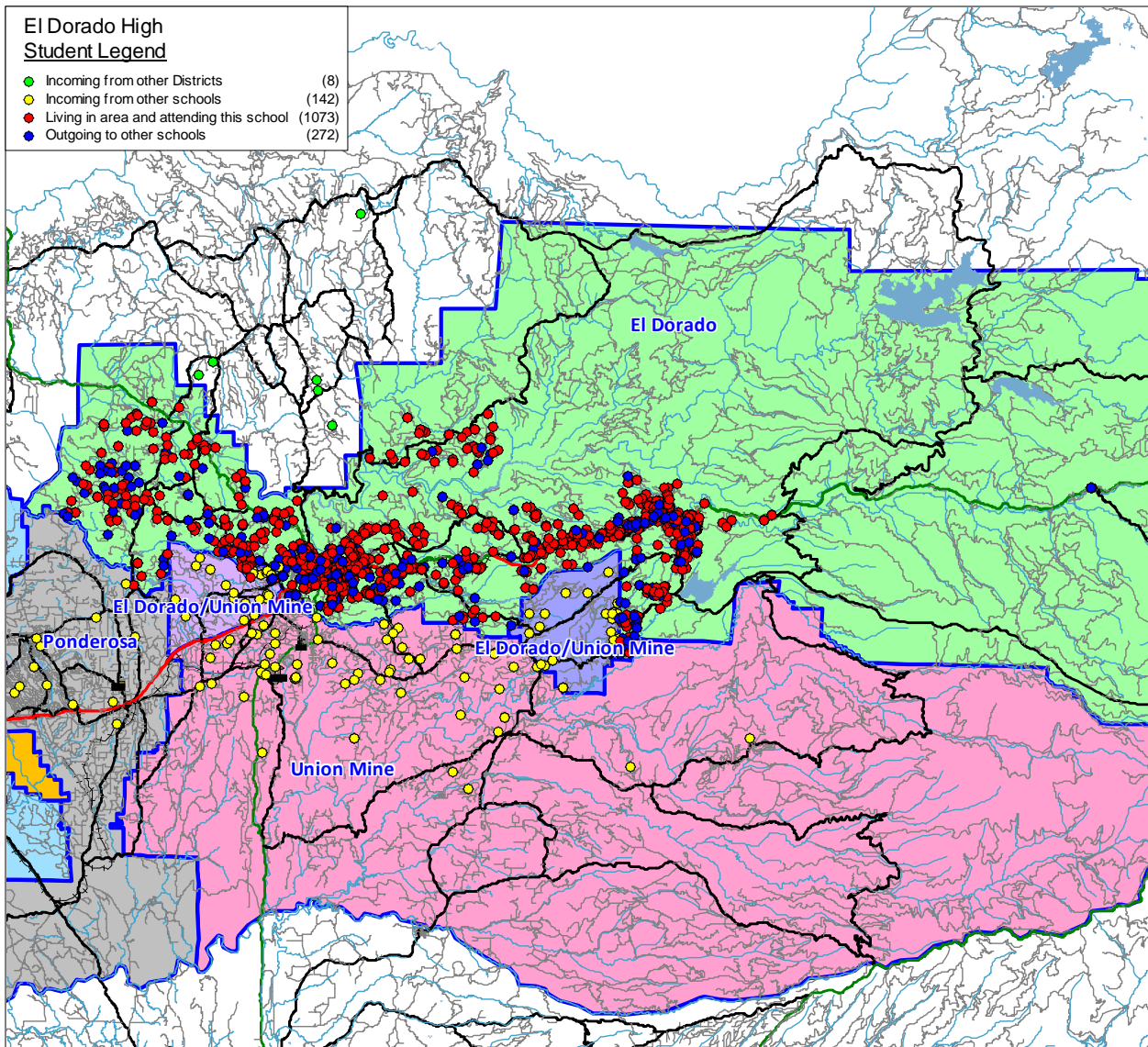
The number of students living in the boundary are shown, which are then used to generate the cohort factors. The non-weighted average of the three years was determined with each year weighted 33.3%. This reduces the current trends compared to the weighted model. This was done due to the impacts of the pandemic which should be a short-term adjustment. Those cohorts are then used to determine the students who will be residing in each attendance area for the following years.

The Attendance Factors were determined by analyzing the current year of students to see how many Inter- and Intra-District transfers there are. Once the baseline projections are calculated for the residents in the attendance area, the Intra-District and Inter-District factors are applied to determine the projected enrollment for each school.

The last three columns in the chart, Current Enrollment, 23/24 Projection, and Net Change, show the current enrollment, next year’s projection and net change in enrollment for next year. These are compared by grade to show the details needed for staffing and classroom needs.

El Dorado Union High School District

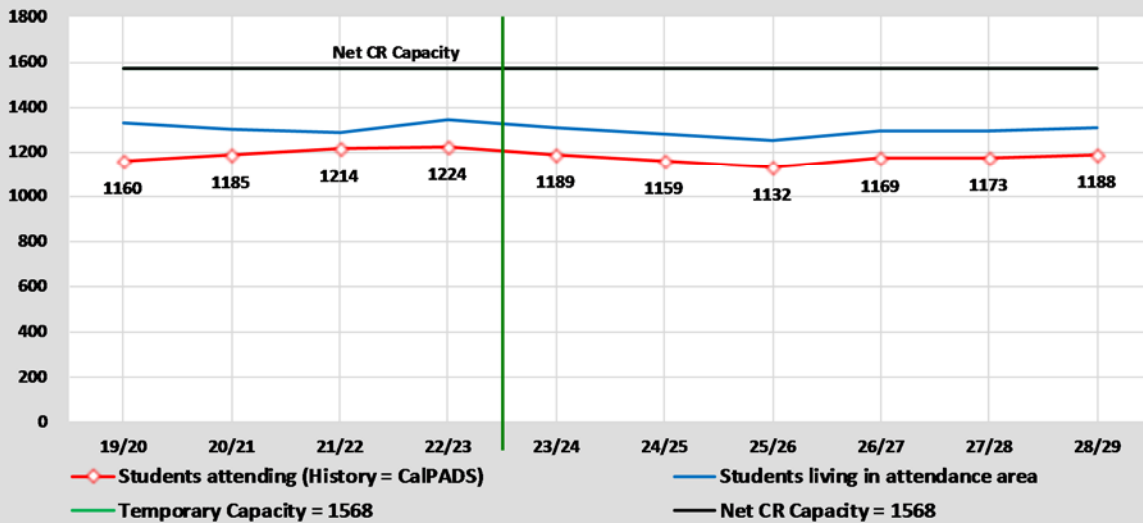
2022/23 Demographics and Enrollment Projections



El Dorado Union High School District

2022/23 Demographics and Enrollment Projections

Capacity & Projected Enrollment El Dorado High



District Loading Standards
 Traditional School
 All Portables Loaded
 Net Classroom Count = 57
 Grades Served = 9 - 12

Classroom Needs Timeline

Year	Total Students*	Annual Change	Spec. Ed. Students	Net CR Capacity	Unhoused Students	Annual CR Needed	Total CR's Needed	Available Seats	Projected Housing Units
22/23	1224	10	0	1568	0	0	-12	344	
23/24	1189	-35	0	1568	0	0	-14	379	2
24/25	1159	-30	0	1568	0	0	-15	409	2
25/26	1132	-27	0	1568	0	0	-16	436	87
26/27	1169	37	0	1568	0	0	-14	399	87
27/28	1173	4	0	1568	0	0	-14	395	51
28/29	1188	15	0	1568	0	0	-14	380	62

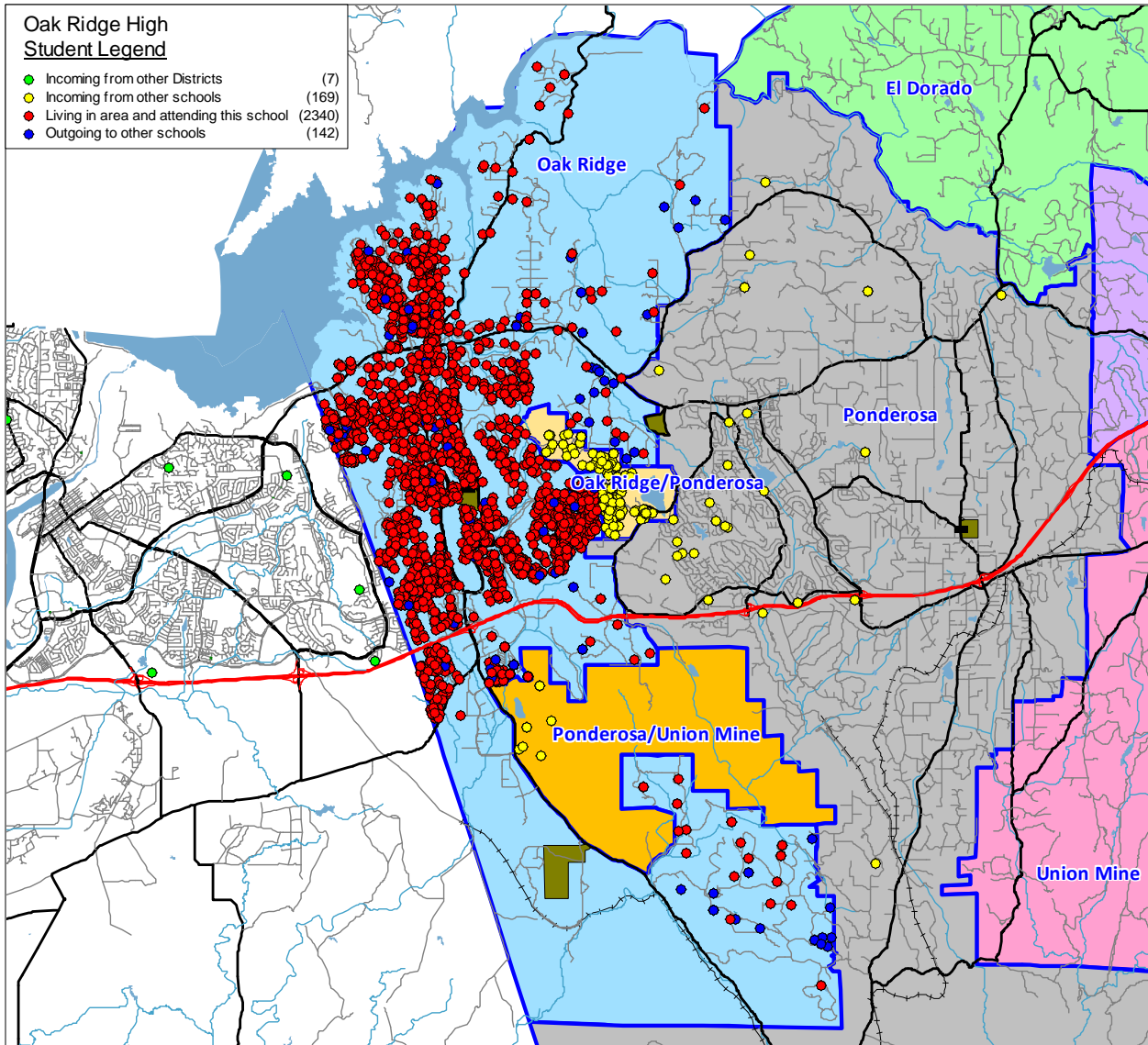
* Based on Students Attending (Squares on Graph)
 Net Classroom Count = 57

El Dorado High

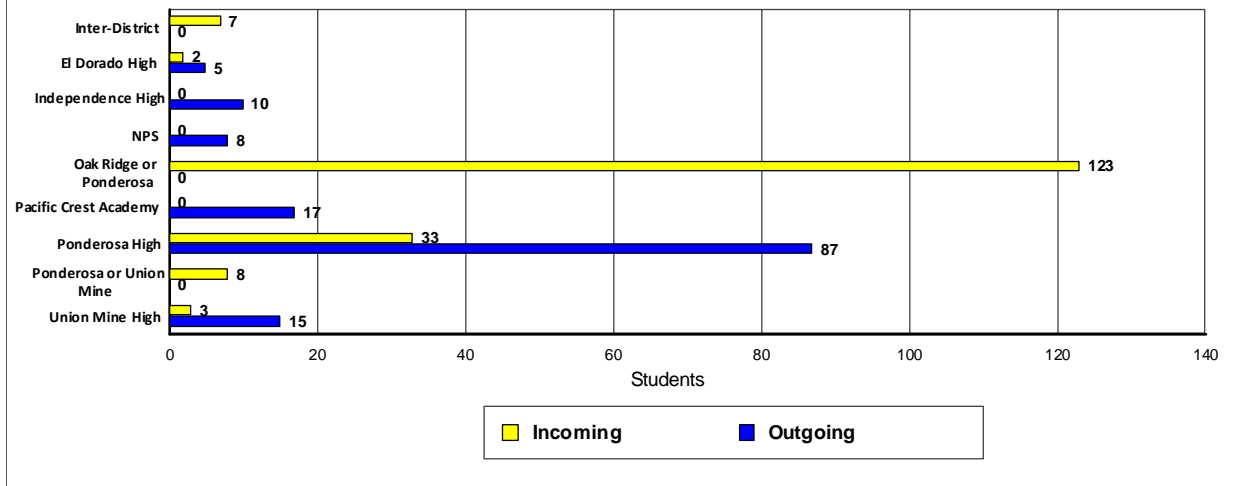
YEAR:	Students in boundary				Historic Cohorts			Weighted Average	Attendance Factors		Current Enrollment	23/24 Projection	Net Change
	19/20	20/21	21/22	22/23	19 to 20	20 to 21	21 to 22		Intra	Inter			
Grade													
K	292	240	236	267	-52	-4	31	0	0.0%	0.0%	0	0	0
1	292	270	277	284	-22	37	48	21	0.0%	0.0%	0	0	0
2	317	265	273	299	-27	3	22	-1	0.0%	0.0%	0	0	0
3	296	297	278	298	-20	13	25	6	0.0%	0.0%	0	0	0
4	301	281	304	294	-15	7	16	3	0.0%	0.0%	0	0	0
5	304	287	272	321	-14	-9	17	-2	0.0%	0.0%	0	0	0
6	317	294	307	314	-10	20	42	17	0.0%	0.0%	0	0	0
7	333	308	288	298	-9	-6	-9	-8	0.0%	0.0%	0	0	0
8	354	345	318	319	12	10	31	18	0.0%	0.0%	0	0	0
9	345	359	363	330	5	18	12	12	-7.3%	0.9%	309	310	1
10	331	341	345	365	-4	-14	2	-5	-7.9%	0.5%	338	298	-40
11	315	310	297	325	-21	-44	-20	-28	-9.5%	0.3%	295	307	12
12	335	290	282	325	-25	-28	28	-8	-13.8%	0.6%	282	274	-8
Totals	4132	3887	3840	4039	-15.5	0.2	18.8	1.9	-9.7%	0.6%	1224	1189	-35

El Dorado Union High School District

2022/23 Demographics and Enrollment Projections



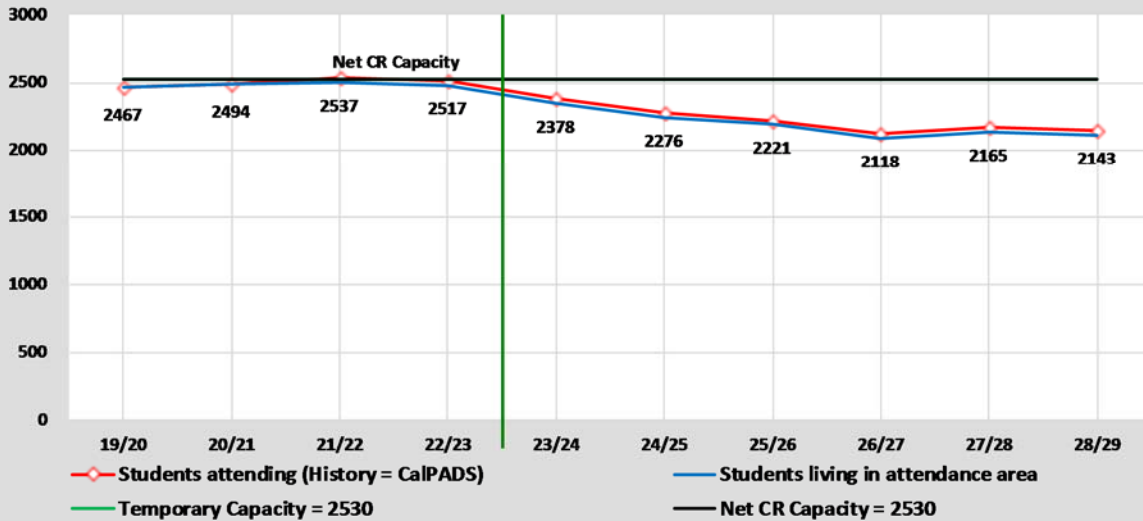
Oak Ridge High
Transfer Students



El Dorado Union High School District

2022/23 Demographics and Enrollment Projections

Capacity & Projected Enrollment Oak Ridge High



District Loading Standards
 Traditional School
 All Portables Loaded
 Net Classroom Count = 92
 Grades Served = 9 - 12

Classroom Needs Timeline

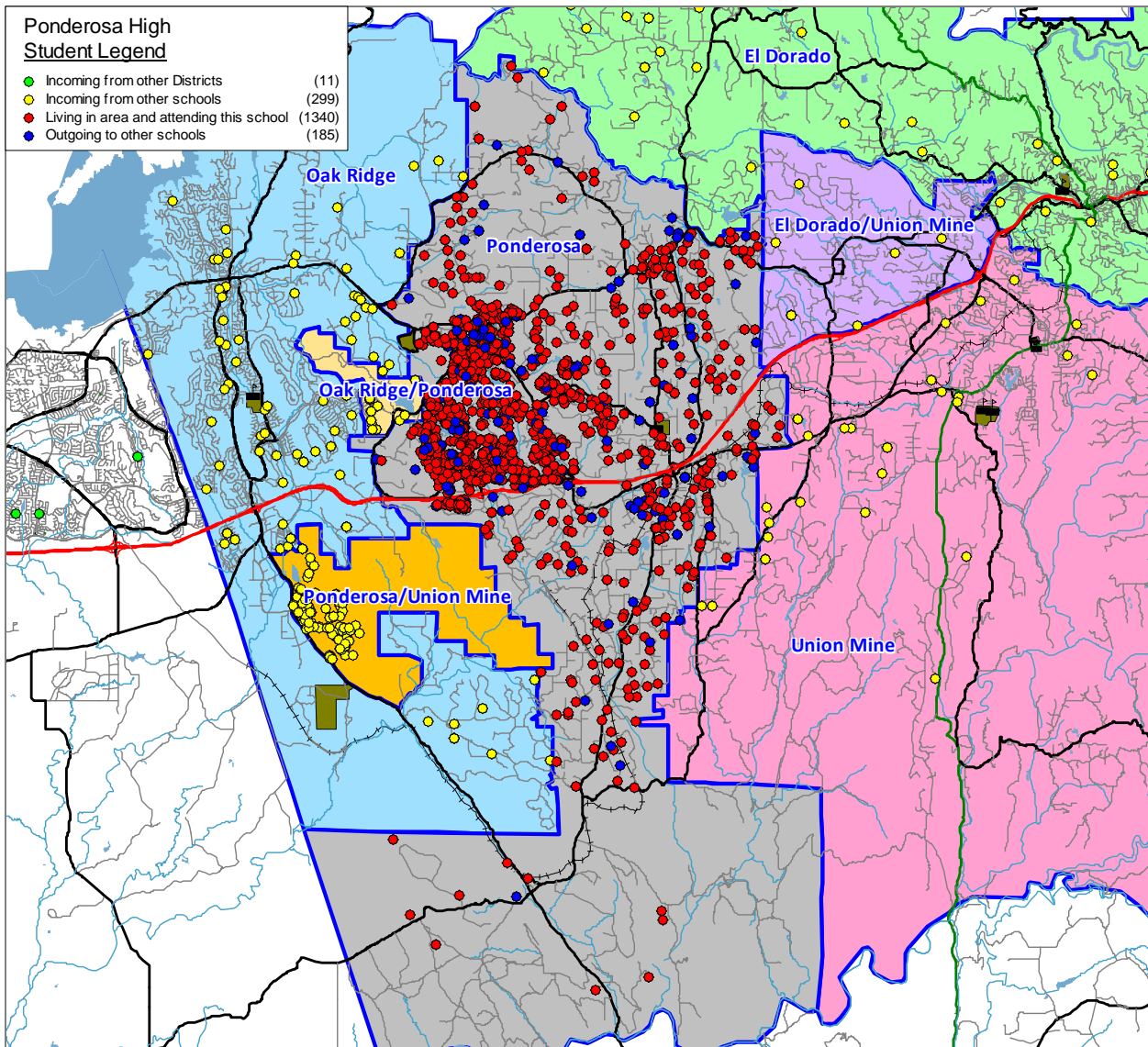
Year	Total Students*	Annual Change	Spec. Ed. Students	Net CR Capacity	Unhoused Students	Annual CR Needed	Total CR's Needed	Available Seats	Projected Housing Units
22/23	2517	-20	0	2530	0	0	0	13	
23/24	2378	-139	0	2530	0	0	-6	152	111
24/25	2276	-102	0	2530	0	0	-9	254	117
25/26	2221	-55	0	2530	0	0	-11	309	71
26/27	2118	-103	0	2530	0	0	-15	412	103
27/28	2165	47	0	2530	0	0	-13	365	138
28/29	2143	-22	0	2530	0	0	-14	387	135

* Based on Students Attending (Squares on Graph)
 Net Classroom Count = 92

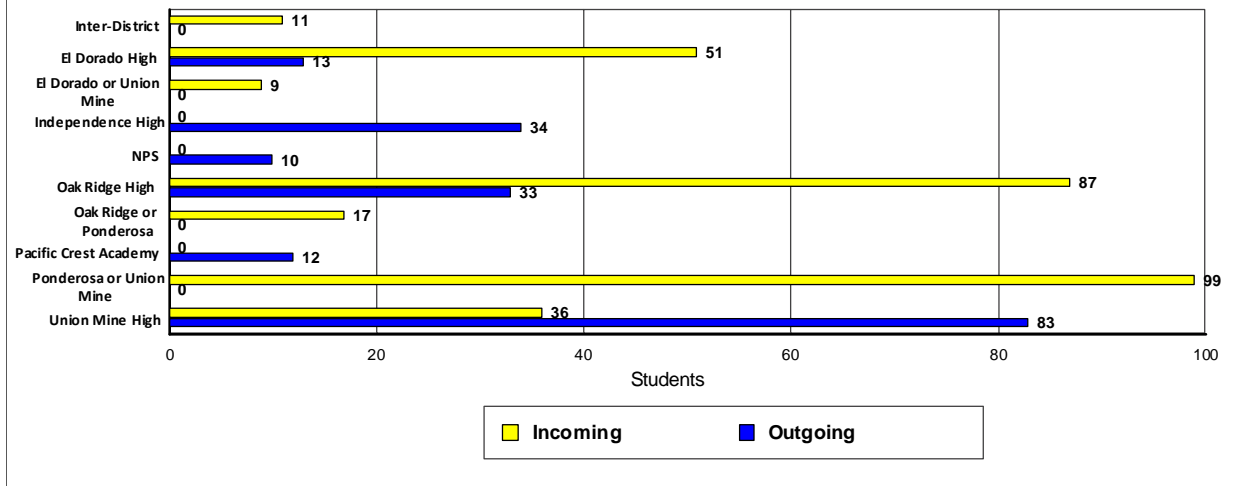
Oak Ridge High

YEAR:	Students in boundary				Historic Cohorts			Weighted Average	Attendance Factors		Current Enrollment	23/24 Projection	Net Change
	19/20	20/21	21/22	22/23	19 to 20	20 to 21	21 to 22		Intra	Inter			
Grade													
K	360	313	325	313	-47	12	-12	0	0.0%	0.0%	0	0	0
1	432	382	373	376	22	60	51	44	0.0%	0.0%	0	0	0
2	416	436	434	391	4	52	18	25	0.0%	0.0%	0	0	0
3	483	407	463	451	-9	27	17	12	0.0%	0.0%	0	0	0
4	506	501	426	483	18	19	20	19	0.0%	0.0%	0	0	0
5	434	519	534	444	13	33	18	21	0.0%	0.0%	0	0	0
6	550	437	543	547	3	24	13	13	0.0%	0.0%	0	0	0
7	607	550	466	524	0	29	-19	3	0.0%	0.0%	0	0	0
8	616	588	568	471	-19	18	5	1	0.0%	0.0%	0	0	0
9	633	668	626	595	52	38	27	39	3.2%	0.7%	618	532	-86
10	614	614	651	620	-19	-17	-6	-14	2.4%	0.0%	635	595	-40
11	620	606	620	644	-8	6	-7	-3	0.3%	0.2%	647	619	-28
12	595	606	603	623	-14	-3	3	-5	-1.3%	0.3%	617	632	15
Totals	6866	6627	6632	6482	-0.3	22.9	9.8	11.9	1.2%	0.3%	2517	2378	-139

El Dorado Union High School District 2022/23 Demographics and Enrollment Projections



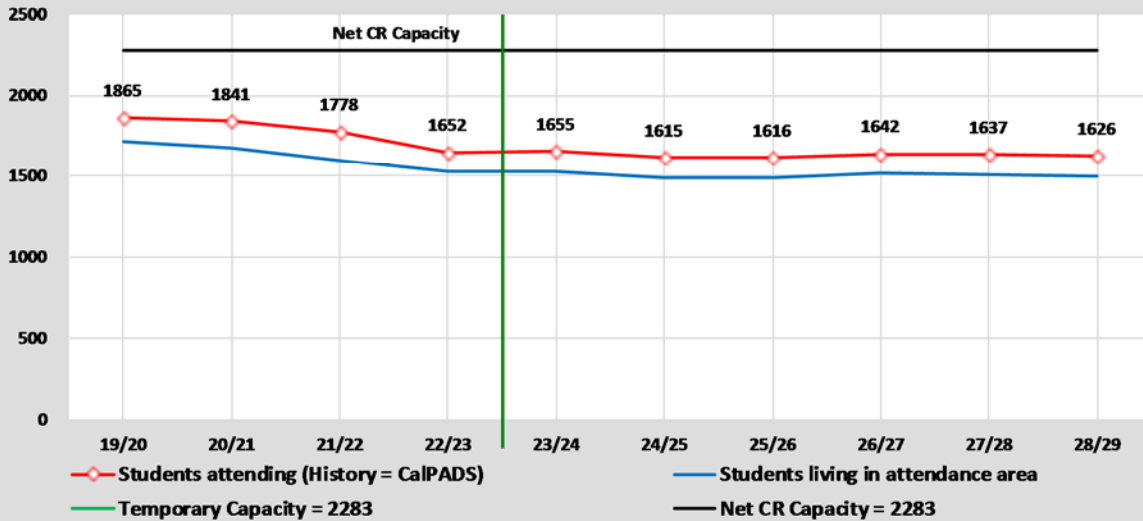
Ponderosa High
Transfer Students



El Dorado Union High School District

2022/23 Demographics and Enrollment Projections

Capacity & Projected Enrollment Ponderosa High



District Loading Standards
 Traditional School
 All Portables Loaded
 Net Classroom Count = 83
 Grades Served = 9 - 12

Classroom Needs Timeline

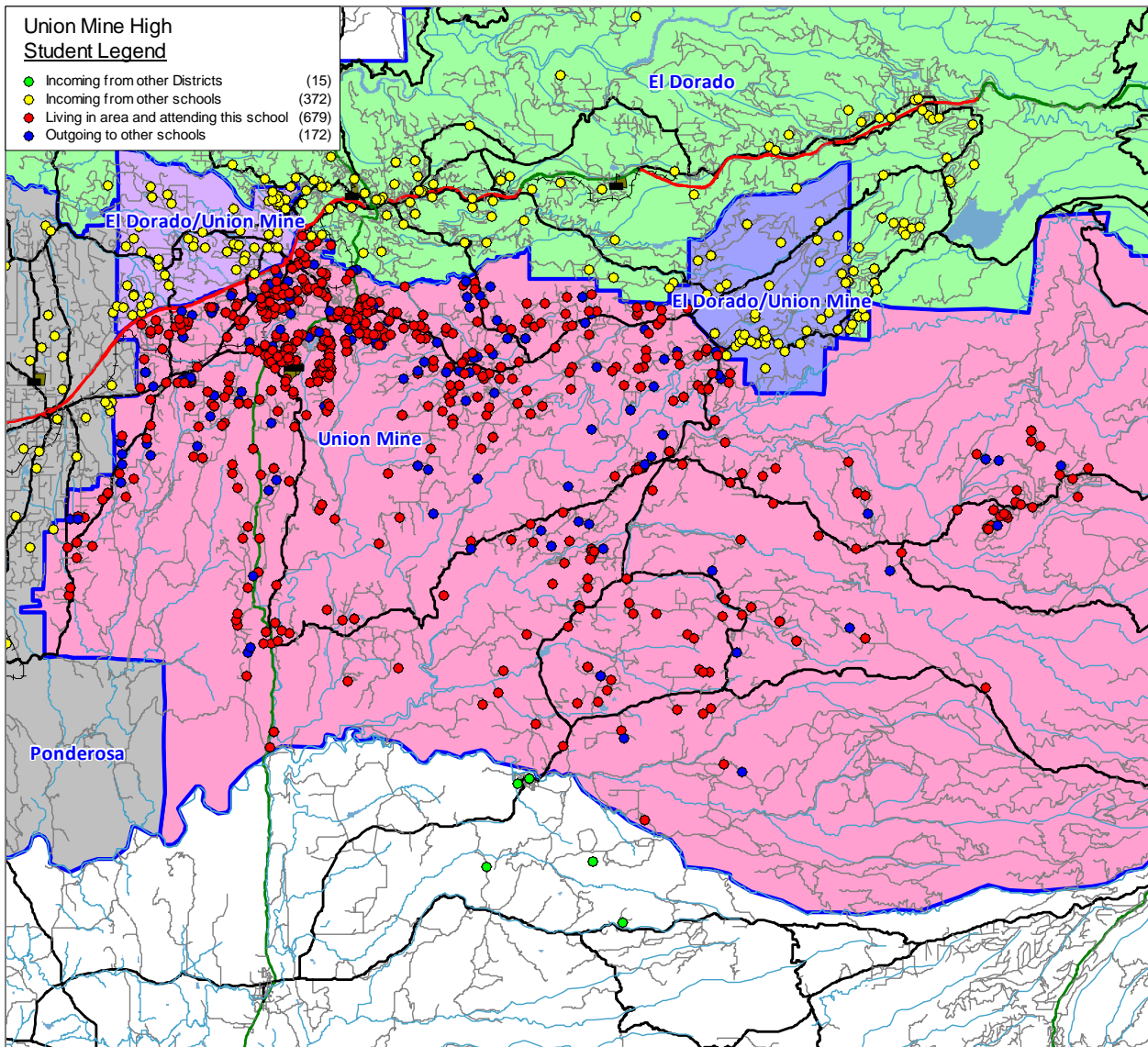
Year	Total Students*	Annual Change	Spec. Ed. Students	Net CR Capacity	Unhoused Students	Annual CR Needed	Total CR's Needed	Available Seats	Projected Housing Units
22/23	1652	-126	0	2283	0	0	-23	631	
23/24	1655	3	0	2283	0	0	-23	628	101
24/25	1615	-40	0	2283	0	0	-24	668	74
25/26	1616	1	0	2283	0	0	-24	667	55
26/27	1642	26	0	2283	0	0	-23	641	27
27/28	1637	-5	0	2283	0	0	-23	646	98
28/29	1626	-11	0	2283	0	0	-24	657	118

* Based on Students Attending (Squares on Graph)
 Net Classroom Count = 83

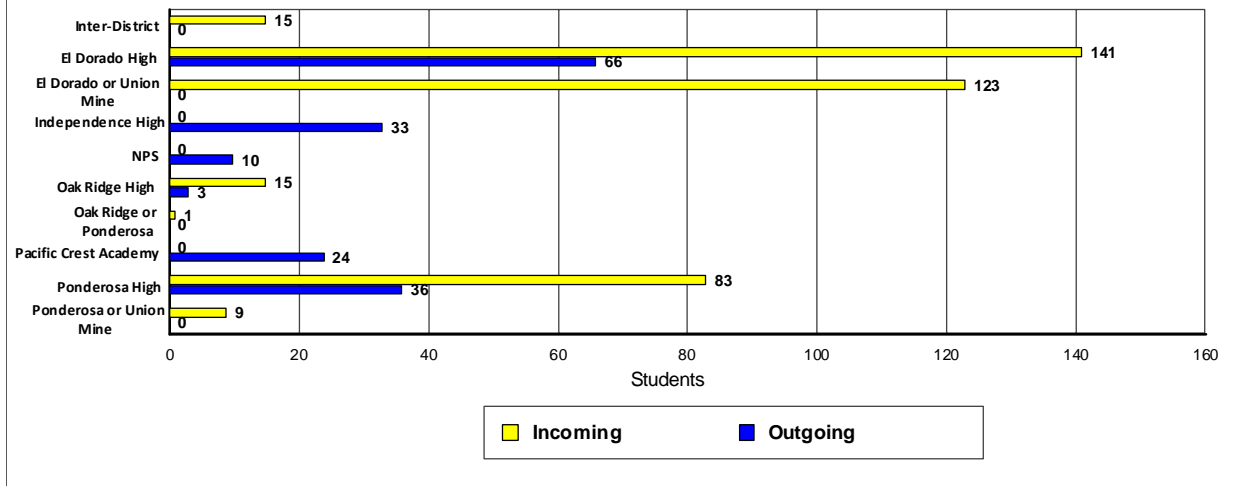
Ponderosa High

YEAR:	Students in boundary				Historic Cohorts			Weighted Average	Attendance Factors		Current Enrollment	23/24 Projection	Net Change
	19/20	20/21	21/22	22/23	19 to 20	20 to 21	21 to 22		Intra	Inter			
Grade K	288	263	285	263	-25	22	-22	0	0.0%	0.0%	0	0	0
1	325	275	280	302	-13	17	17	7	0.0%	0.0%	0	0	0
2	289	326	291	310	1	16	30	16	0.0%	0.0%	0	0	0
3	313	301	327	287	12	1	-4	3	0.0%	0.0%	0	0	0
4	320	311	320	336	-2	19	9	9	0.0%	0.0%	0	0	0
5	340	319	325	322	-1	14	2	5	0.0%	0.0%	0	0	0
6	286	330	314	323	-10	-5	-2	-6	0.0%	0.0%	0	0	0
7	360	292	351	325	6	21	11	13	0.0%	0.0%	0	0	0
8	349	347	312	362	-13	20	11	6	0.0%	0.0%	0	0	0
9	401	407	391	353	58	44	41	48	10.5%	0.6%	392	450	58
10	459	397	411	388	-4	4	-3	-1	12.1%	1.0%	439	404	-35
11	448	442	370	399	-17	-27	-12	-19	5.3%	0.0%	420	391	-29
12	408	435	422	385	-13	-20	15	-6	2.9%	1.3%	401	410	9
Totals	4586	4445	4399	4355	-1.6	9.7	7.2	5.8	7.7%	0.7%	1652	1655	3

El Dorado Union High School District 2022/23 Demographics and Enrollment Projections



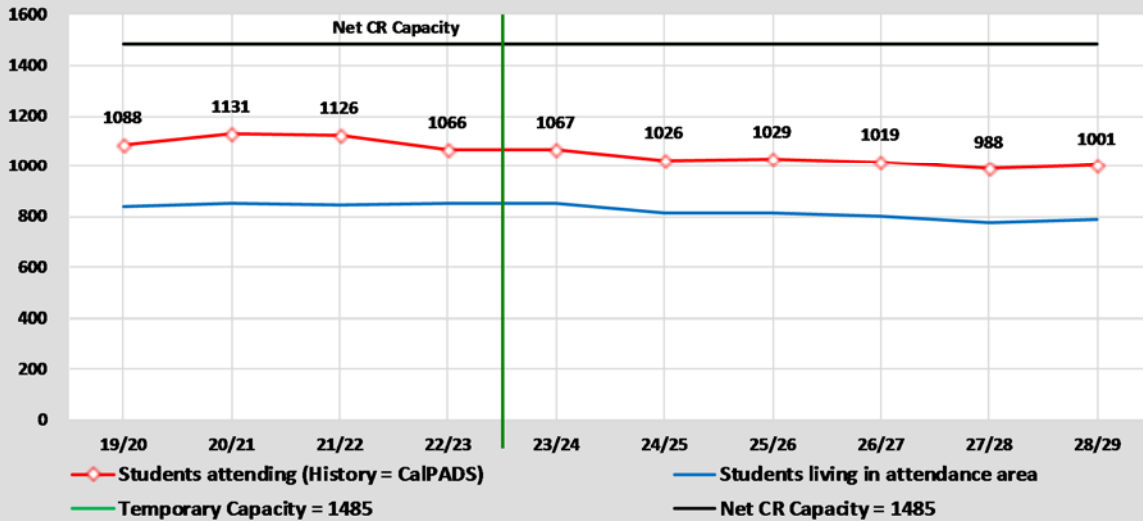
Union Mine High
Transfer Students



El Dorado Union High School District

2022/23 Demographics and Enrollment Projections

Capacity & Projected Enrollment Union Mine High



District Loading Standards
 Traditional School
 All Portables Loaded
 Net Classroom Count = 54
 Grades Served = 9 - 12

Classroom Needs Timeline

Year	Total Students*	Annual Change	Spec. Ed. Students	Net CR Capacity	Unhoused Students	Annual CR Needed	Total CR's Needed	Available Seats	Projected Housing Units
22/23	1066	-60	0	1485	0	0	-15	419	
23/24	1067	1	0	1485	0	0	-15	418	0
24/25	1026	-41	0	1485	0	0	-17	459	0
25/26	1029	3	0	1485	0	0	-17	456	58
26/27	1019	-10	0	1485	0	0	-17	466	59
27/28	988	-31	0	1485	0	0	-18	497	42
28/29	1001	13	0	1485	0	0	-18	484	104

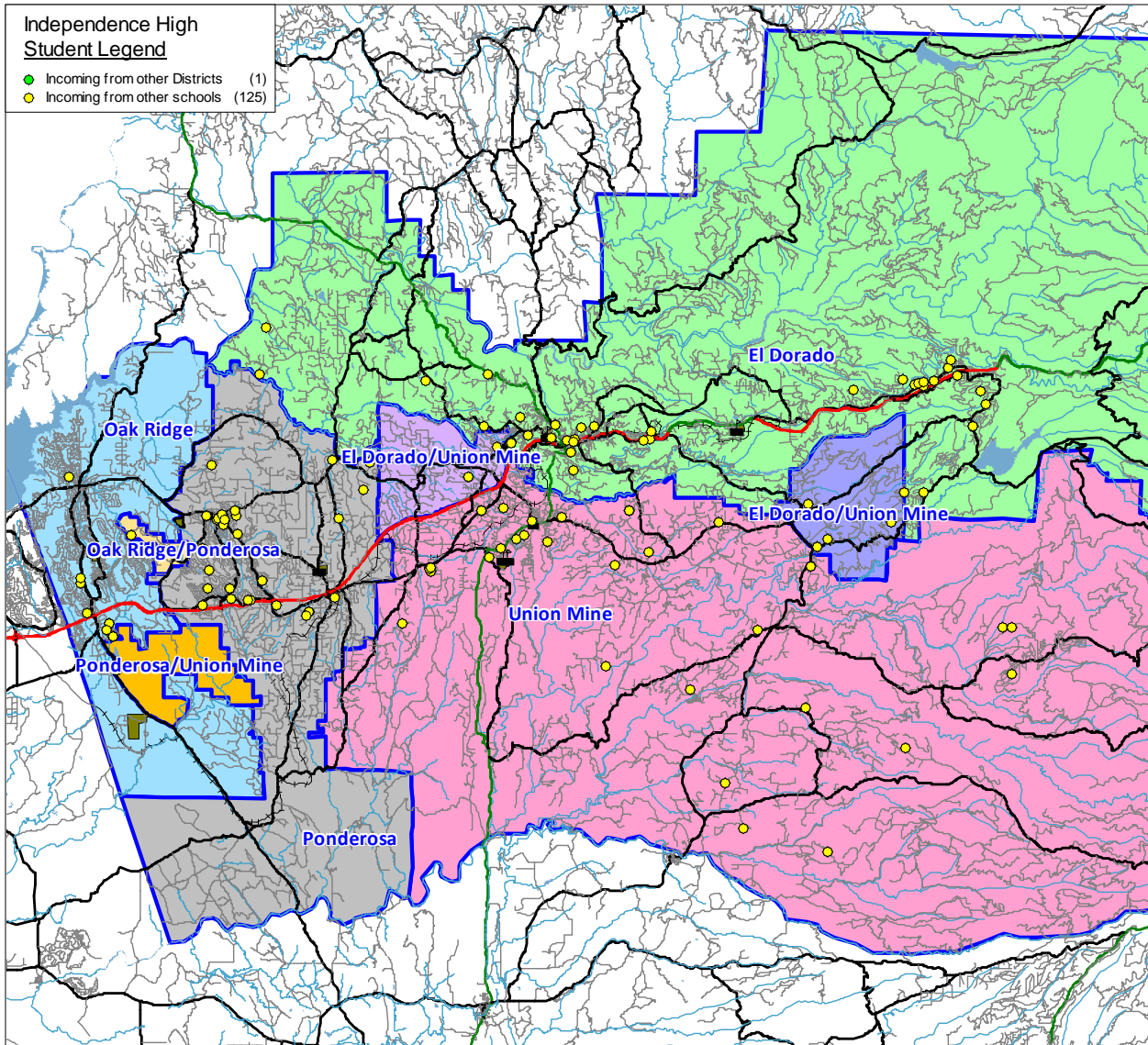
* Based on Students Attending (Squares on Graph)
 Net Classroom Count = 54

Union Mine High

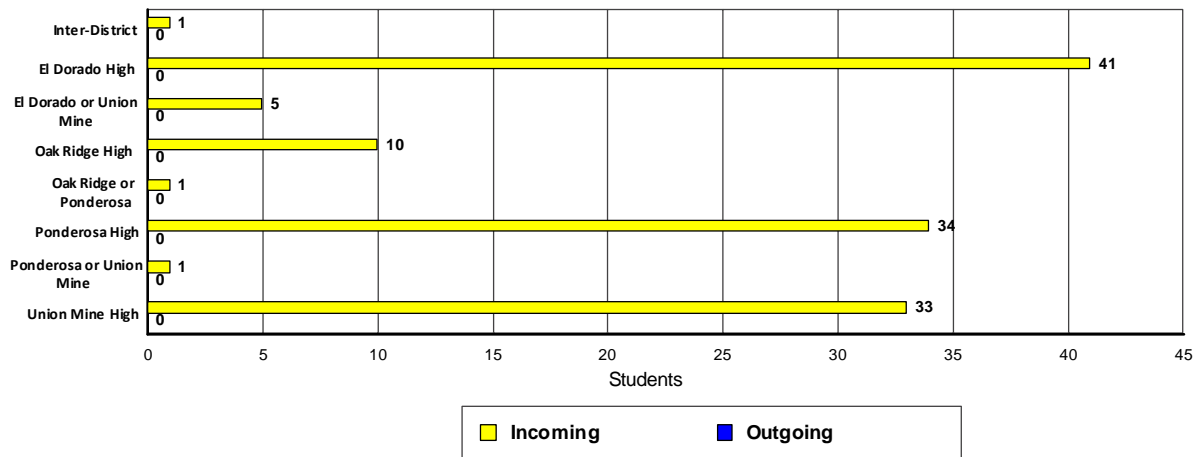
YEAR:	Students in boundary				Historic Cohorts			Weighted Average	Attendance Factors		Current Enrollment	23/24 Projection	Net Change
	19/20	20/21	21/22	22/23	19 to 20	20 to 21	21 to 22		Intra	Inter			
Grade K	185	156	149	145	-29	-7	-4	0	0.0%	0.0%	0	0	0
1	180	163	151	148	-22	-5	-1	-5	0.0%	0.0%	0	0	0
2	180	178	165	161	-2	2	10	3	0.0%	0.0%	0	0	0
3	164	158	170	182	-22	-8	17	-4	0.0%	0.0%	0	0	0
4	184	167	159	172	3	1	2	2	0.0%	0.0%	0	0	0
5	198	156	156	155	-28	-11	-4	-14	0.0%	0.0%	0	0	0
6	181	178	153	166	-20	-3	10	-4	0.0%	0.0%	0	0	0
7	197	171	172	161	-10	-6	8	-3	0.0%	0.0%	0	0	0
8	172	189	170	187	-8	-1	15	2	0.0%	0.0%	0	0	0
9	221	225	204	201	53	15	31	33	29.4%	2.0%	264	283	19
10	216	221	232	206	0	7	2	3	28.2%	1.5%	267	265	-2
11	203	208	202	230	-8	-19	-2	-10	23.5%	1.3%	287	253	-34
12	196	200	206	214	-3	-2	12	2	13.6%	2.3%	248	266	18
Totals	2477	2370	2289	2328	-7.4	-2.8	7.4	0.4	23.6%	1.8%	1066	1067	1

El Dorado Union High School District

2022/23 Demographics and Enrollment Projections



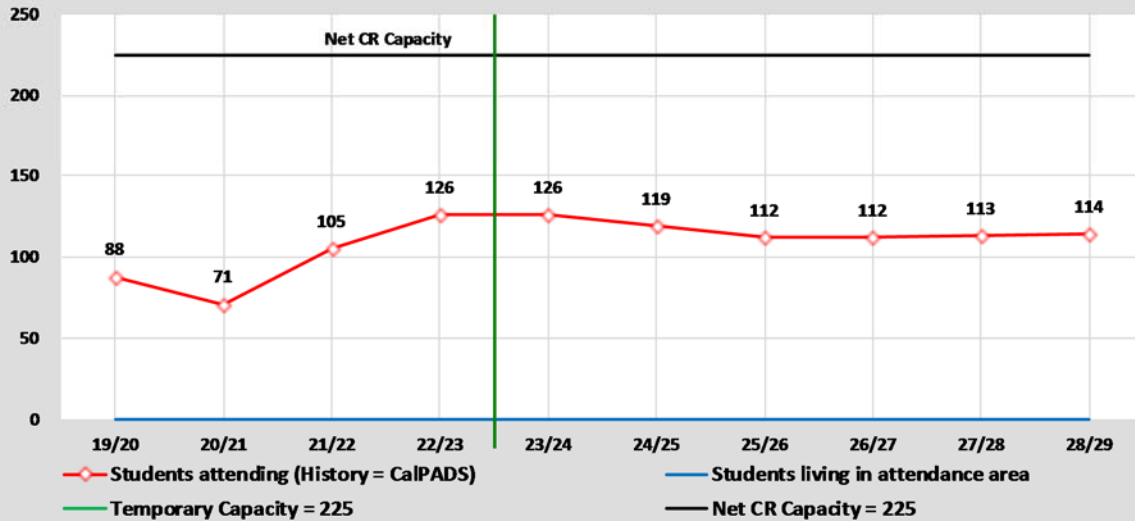
Independence High
Transfer Students



El Dorado Union High School District

2022/23 Demographics and Enrollment Projections

Capacity & Projected Enrollment Independence High



District Loading Standards
 Traditional School
 All Portables Loaded
 Net Classroom Count = 9
 Grades Served = 9 - 12

Classroom Needs Timeline

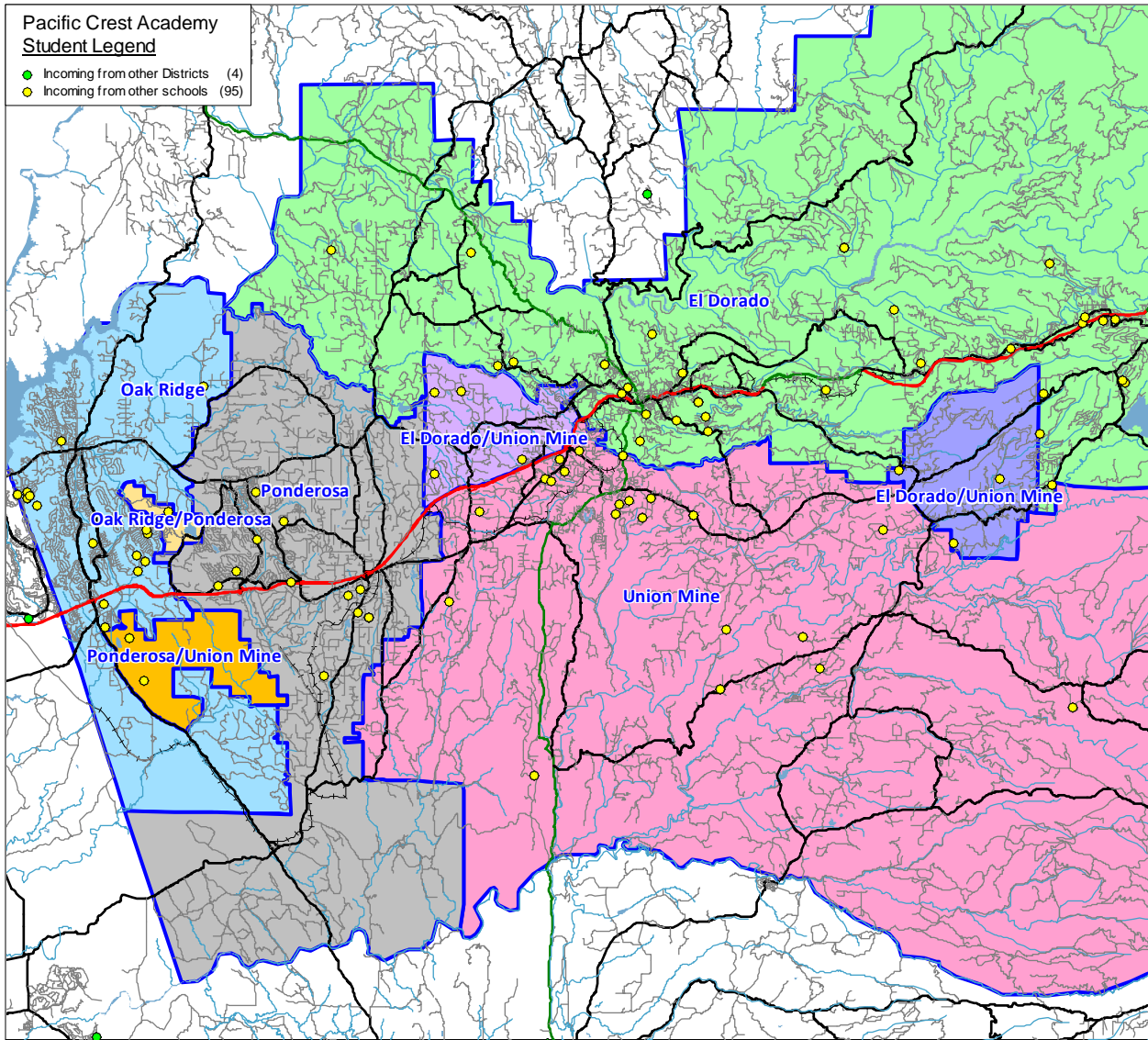
Year	Total Students*	Annual Change	Spec. Ed. Students	Net CR Capacity	Unhoused Students	Annual CR Needed	Total CR's Needed	Available Seats	Projected Housing Units
22/23	126	21	0	225	0	0	-4	99	
23/24	126	0	0	225	0	0	-4	99	214
24/25	119	-7	0	225	0	0	-4	106	193
25/26	112	-7	0	225	0	0	-5	113	271
26/27	112	0	0	225	0	0	-5	113	276
27/28	113	1	0	225	0	0	-4	112	329
28/29	114	1	0	225	0	0	-4	111	419

* Based on Students Attending (Squares on Graph)
 Net Classroom Count = 9

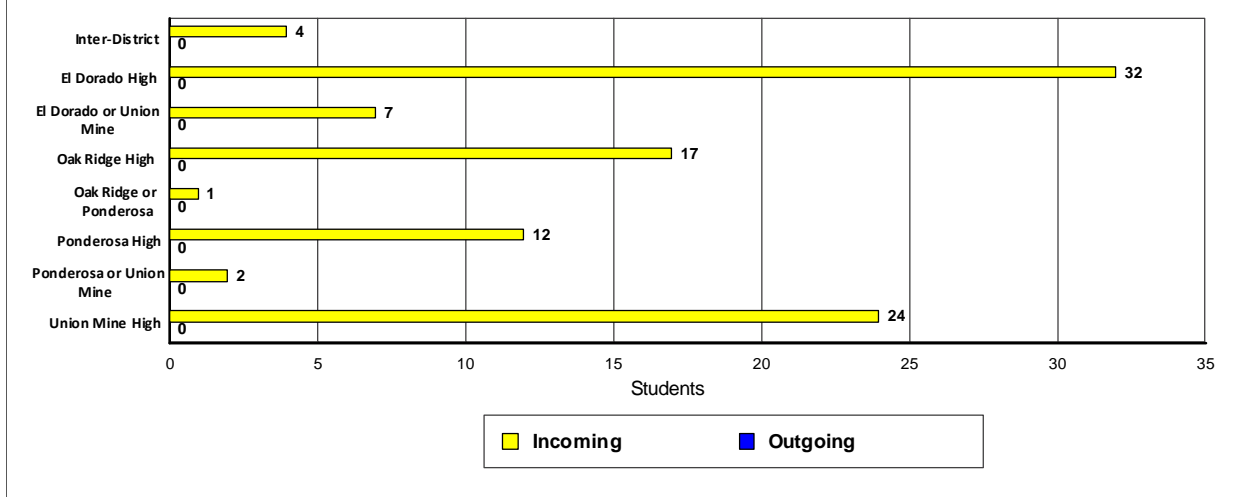
Independence High

YEAR:	Students in boundary				Historic Cohorts			Weighted Average	Attendance Factors		Current Enrollment	23/24 Projection	Net Change
	19/20	20/21	21/22	22/23	19 to 20	20 to 21	21 to 22		Intra	Inter			
Grade K	1125	972	995	988	-153	23	-7	0	0.0%	0.0%	0	0	0
1	1229	1090	1081	1110	-35	109	115	63	0.0%	0.0%	0	0	0
2	1202	1205	1163	1161	-24	73	80	43	0.0%	0.0%	0	0	0
3	1256	1163	1238	1218	-39	33	55	16	0.0%	0.0%	0	0	0
4	1311	1260	1209	1285	4	46	47	32	0.0%	0.0%	0	0	0
5	1276	1281	1287	1242	-30	27	33	10	0.0%	0.0%	0	0	0
6	1334	1239	1317	1350	-37	36	63	21	0.0%	0.0%	0	0	0
7	1497	1321	1277	1308	-13	38	-9	5	0.0%	0.0%	0	0	0
8	1491	1469	1368	1339	-28	47	62	27	0.0%	0.0%	0	0	0
9	1600	1659	1584	1479	168	115	111	131	0.0%	0.0%	0	0	0
10	1620	1573	1639	1579	-27	-20	-5	-17	0.1%	0.1%	2	2	0
11	1586	1566	1489	1598	-54	-84	-41	-60	-0.1%	2.3%	36	34	-2
12	1534	1531	1513	1547	-55	-53	58	-17	0.0%	5.7%	88	90	2
Totals	18061	17329	17160	17204	-24.8	30.0	43.2	19.5	0.0%	2.7%	126	126	0

El Dorado Union High School District 2022/23 Demographics and Enrollment Projections



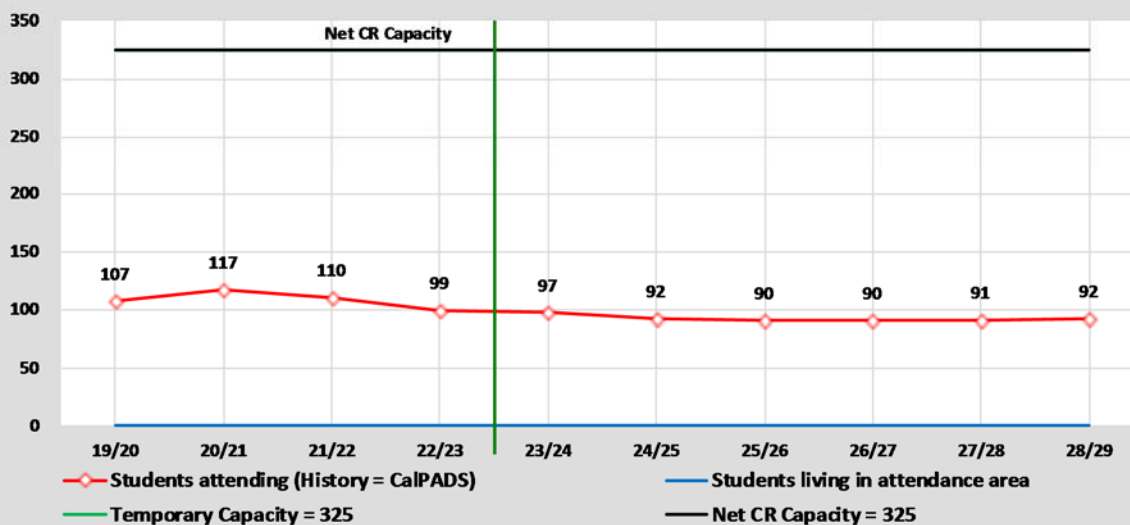
**Pacific Crest Academy
Transfer Students**



El Dorado Union High School District

2022/23 Demographics and Enrollment Projections

Capacity & Projected Enrollment Pacific Crest Academy



District Loading Standards
 Traditional School
 All Portables Loaded
 Net Classroom Count = 13
 Grades Served = 9 - 12

Classroom Needs Timeline

Year	Total Students*	Annual Change	Spec. Ed. Students	Net CR Capacity	Unhoused Students	Annual CR Needed	Total CR's Needed	Available Seats	Projected Housing Units
22/23	99	-11	0	325	0	0	-9	226	
23/24	97	-2	0	325	0	0	-9	228	214
24/25	92	-5	0	325	0	0	-9	233	193
25/26	90	-2	0	325	0	0	-9	235	271
26/27	90	0	0	325	0	0	-9	235	276
27/28	91	1	0	325	0	0	-9	234	329
28/29	92	1	0	325	0	0	-9	233	419

* Based on Students Attending (Squares on Graph)
 Net Classroom Count = 13

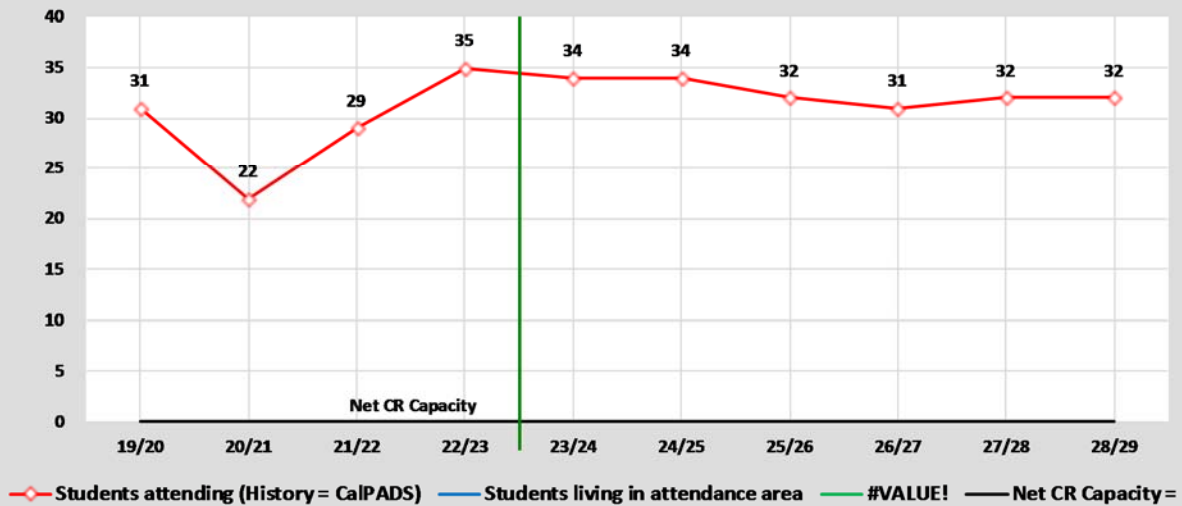
Pacific Crest Academy

YEAR:	Students in boundary				Historic Cohorts			Weighted Average	Attendance Factors		Current Enrollment	23/24 Projection	Net Change
	19/20	20/21	21/22	22/23	19 to 20	20 to 21	21 to 22		Intra	Inter			
Grade K	1125	972	995	988	-153	23	-7	0	0.0%	0.0%	0	0	0
1	1229	1090	1081	1110	-35	109	115	63	0.0%	0.0%	0	0	0
2	1202	1205	1163	1161	-24	73	80	43	0.0%	0.0%	0	0	0
3	1256	1163	1238	1218	-39	33	55	16	0.0%	0.0%	0	0	0
4	1311	1260	1209	1285	4	46	47	32	0.0%	0.0%	0	0	0
5	1276	1281	1287	1242	-30	27	33	10	0.0%	0.0%	0	0	0
6	1334	1239	1317	1350	-37	36	63	21	0.0%	0.0%	0	0	0
7	1497	1321	1277	1308	-13	38	-9	5	0.0%	0.0%	0	0	0
8	1491	1469	1368	1339	-28	47	62	27	0.0%	0.0%	0	0	0
9	1600	1659	1584	1479	168	115	111	131	0.0%	1.4%	20	20	0
10	1620	1573	1639	1579	-27	-20	-5	-17	0.0%	1.3%	21	19	-2
11	1586	1566	1489	1598	-54	-84	-41	-60	0.0%	1.8%	29	28	-1
12	1534	1531	1513	1547	-55	-53	58	-17	0.0%	1.9%	29	30	1
Totals	18061	17329	17160	17204	-24.8	30.0	43.2	19.5	0.0%	1.6%	99	97	-2

El Dorado Union High School District

2022/23 Demographics and Enrollment Projections

Capacity & Projected Enrollment Non Public School



District Loading Standards
 Traditional School
 All Portables Loaded
 Net Classroom Count =
 Grades Served = 9 - 12

Classroom Needs Timeline

Year	Total Students*	Annual Change	Spec. Ed. Students	Net CR Capacity	Unhoused Students	Annual CR Needed	Total CR's Needed	Available Seats	Projected Housing Units
22/23	35	6	0	0	35	1	1	0	
23/24	34	-1	0	0	34	0	1	0	214
24/25	34	0	0	0	34	0	1	0	193
25/26	32	-2	0	0	32	0	1	0	271
26/27	31	-1	0	0	31	0	1	0	276
27/28	32	1	0	0	32	0	1	0	329
28/29	32	0	0	0	32	0	1	0	419

* Based on Students Attending (Squares on Graph)
 Net Classroom Count = 0

Non Public School

YEAR:	Students in boundary				Historic Cohorts			Weighted Average	Attendance Factors		Current Enrollment	23/24 Projection	Net Change
	19/20	20/21	21/22	22/23	19 to 20	20 to 21	21 to 22		Intra	Inter			
Grade													
K	1125	972	995	988	-153	23	-7	0	0.0%	0.0%	0	0	0
1	1229	1090	1081	1110	-35	109	115	63	0.0%	0.0%	0	0	0
2	1202	1205	1163	1161	-24	73	80	43	0.0%	0.0%	0	0	0
3	1256	1163	1238	1218	-39	33	55	16	0.0%	0.0%	0	0	0
4	1311	1260	1209	1285	4	46	47	32	0.0%	0.0%	0	0	0
5	1276	1281	1287	1242	-30	27	33	10	0.0%	0.0%	0	0	0
6	1334	1239	1317	1350	-37	36	63	21	0.0%	0.0%	0	0	0
7	1497	1321	1277	1308	-13	38	-9	5	0.0%	0.0%	0	0	0
8	1491	1469	1368	1339	-28	47	62	27	0.0%	0.0%	0	0	0
9	1600	1659	1584	1479	168	115	111	131	-0.1%	0.4%	5	5	0
10	1620	1573	1639	1579	-27	-20	-5	-17	0.0%	0.3%	4	4	0
11	1586	1566	1489	1598	-54	-84	-41	-60	0.1%	0.6%	12	11	-1
12	1534	1531	1513	1547	-55	-53	58	-17	-0.1%	1.0%	14	14	0
Totals	18061	17329	17160	17204	-24.8	30.0	43.2	19.5	0.0%	0.6%	35	34	-1

El Dorado Union High School District

2022/23 Demographics and Enrollment Projections

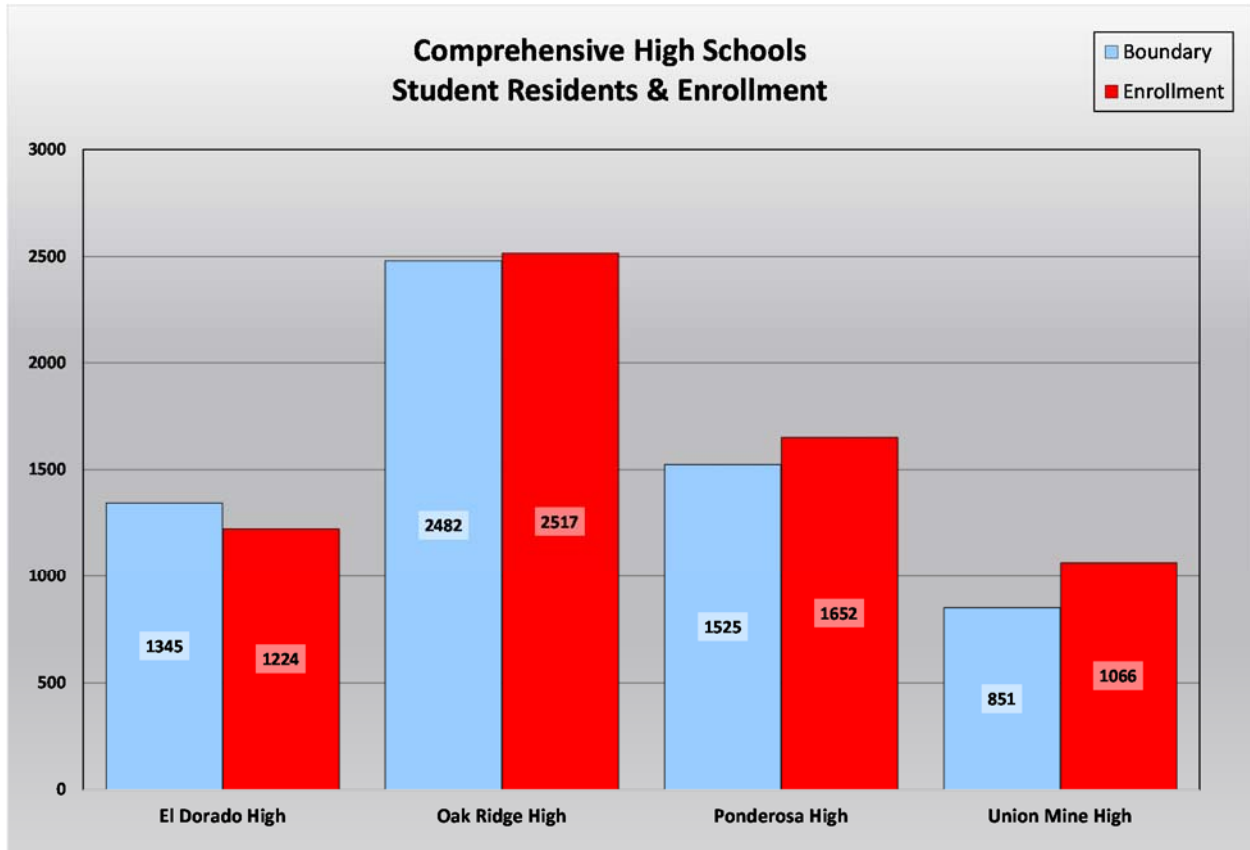
Student Attendance Matrix

ATTENDANCE MATRIX								
SCHOOL: AREA	SCHOOL OF ATTENDANCE							Total Residing
	El Dorado High	Oak Ridge High	Ponderosa High	Union Mine High	Independence High	Pacific Crest Academy	Non Public School	
Inter-District	8	7	11	15	1	4	1	47
El Dorado High	1,073	2	51	141	41	32	5	1,345
Oak Ridge High	5	2,340	87	15	10	17	8	2,482
Ponderosa High	13	33	1,340	83	34	12	10	1,525
Union Mine High	66	3	36	679	33	24	10	851
El Dorado or Union Mine	56	0	9	123	5	7	1	201
Oak Ridge or Ponderosa	1	123	17	1	1	1	0	144
Ponderosa or Union Mine	1	8	99	9	1	2	1	121
Correction Factor*	1	1	2	0	0	0	-1	3
Total Attending	1,224	2,517	1,652	1,066	126	99	35	6,719
Intra-Ins	142	169	299	372	125	95	35	1,237
Inter-Ins	8	7	11	15	1	4	1	47
Total In-Flow	150	176	310	387	126	99	36	1,284
Intra-Outs	272	142	185	172	0	0	0	771
Net Transfers	-122	34	125	215	126	99	36	513
% In-Flow Students	12.3%	7.0%	18.8%	36.3%				19.1%
% Out-Flow Students	20.2%	5.7%	12.1%	20.2%				11.5%

* The correction factor represents the difference between the student data download counts and the actual CaIPADS counts.

This chart summarizes the transfers in and out of each school as were seen by the yellow dots and blue dots on the school attendance maps. In addition, the data has been analyzed to determine the total in-flow and out-flow rates for each school. The school with the largest in-flow rate is Union Mine High and the school with the largest out-flow rate is El Dorado High.

Student Residency and Enrollment Comparison



This chart compares each individual comprehensive high school enrollment to the students that reside within the school attendance boundary. Utilizing this data helps make it easy to see which schools have the largest and smallest enrollments as well as which boundaries are most populated. Schools with more students enrolled than those living in the boundary have a net transfer into the school. This is typically found at schools with special programs such as Gate or Dual Immersion, schools housing students from overcrowded or Program Improvement (PI) schools, and schools with more capacity than the student population living in the boundary.

El Dorado Union High School District

2022/23 Demographics and Enrollment Projections

Ten Year Enrollment History and Six Year Enrollment Projections

This graph shows a summary of the projections for the entire District. It shows the current enrollment for 2022/23, the historic enrollment for the past nine years, and the projected enrollment for the next six years. The end result is a total of 6,196 students in the District in 2028/29.



The El Dorado Union High School District has experienced a mostly stable enrollment over the past ten years from an enrollment of 6,847 in 2013/14 to the current enrollment of 6,719.

This graph is color coded by grade groupings:

Blue represents the historic and projected enrollment for high school grades 9-12.

The entire District enrollment is shown at the top of each bar.

El Dorado Union High School District

2022/23 Demographics and Enrollment Projections

Enrollment Projection Summary by Grade

The chart below shows three years of historic enrollment, the current enrollment, and six years of projected enrollment by grade.

El Dorado Union High School District Enrollment Projection Summary by Grade										
Grade	Historic Enrollment			Current Enrollment	Projected Enrollment					
	<u>19/20</u>	<u>20/21</u>	<u>21/22</u>	<u>22/23</u>	<u>23/24</u>	<u>24/25</u>	<u>25/26</u>	<u>26/27</u>	<u>27/28</u>	<u>28/29</u>
9	1,714	1,747	1,732	1,608	1,600	1,594	1,641	1,553	1,609	1,576
10	1,707	1,660	1,778	1,706	1,587	1,578	1,574	1,622	1,536	1,595
11	1,659	1,654	1,669	1,726	1,643	1,520	1,512	1,508	1,559	1,475
12	1,562	1,575	1,720	1,679	1,716	1,629	1,505	1,498	1,495	1,550
ISP	164	225	0	0	0	0	0	0	0	0
Total 9-12	6,642	6,636	6,899	6,719	6,546	6,321	6,232	6,181	6,199	6,196
Total ISP	164	225	0	0	0	0	0	0	0	0
District Totals	6,806	6,861	6,899	6,719	6,546	6,321	6,232	6,181	6,199	6,196

Enrollment Projection Summary by School

El Dorado Union High School District Enrollment Projection Summary by School							
School	Current Enrollment						
	<u>22/23</u>	<u>23/24</u>	<u>24/25</u>	<u>25/26</u>	<u>26/27</u>	<u>27/28</u>	<u>28/29</u>
El Dorado High	1,224	1,189	1,159	1,132	1,169	1,173	1,188
Oak Ridge High	2,517	2,378	2,276	2,221	2,118	2,165	2,143
Ponderosa High	1,652	1,655	1,615	1,616	1,642	1,637	1,626
Union Mine High	1,066	1,067	1,026	1,029	1,019	988	1,001
High Totals	6,459	6,289	6,076	5,998	5,948	5,963	5,958
Independence High	126	126	119	112	112	113	114
Pacific Crest Academy	99	97	92	90	90	91	92
Non Public School	35	34	34	32	31	32	32
Other Totals	260	257	245	234	233	236	238
District Totals	6,719	6,546	6,321	6,232	6,181	6,199	6,196
Annual Change		-173	-225	-89	-51	18	-3

El Dorado Union High School District
2022/23 Demographics and Enrollment Projections

2023/24 One Year Enrollment Projection by School and Grade

El Dorado Union High School District					
Enrollment Projections					
YEAR 23/24, 1 Year Proj.					
School	9	10	11	12	TOTAL
El Dorado High	310	298	307	274	1,189
Oak Ridge High	532	595	619	632	2,378
Ponderosa High	450	404	391	410	1,655
Union Mine High	283	265	253	266	1,067
Independence High	0	2	34	90	126
Pacific Crest Academy	20	19	28	30	97
Non Public School	5	4	11	14	34
Totals	1,600	1,587	1,643	1,716	6,546
Current CalPADS	1,608	1,706	1,726	1,679	6,719
Net Change	-8	-119	-83	37	-173
Cohort Change		-21	-63	-10	

El Dorado Union High School District has a current enrollment of 6,719 students. The projected enrollment for next year shows a decrease of 173 students. This one year summary analyzes the net change between the current District enrollment by school and by grade, and the projected enrollment for 2023/24.

The students living in the boundary generate the cohort factors which are calculated for the past three years and the average is determined. Those cohorts are then used to determine the students who will be residing in each attendance area for the following years. Next the attendance factor is used to determine the net enrollment for each grade. The attendance factor is determined by analyzing the current year of students to see how many Inter- and Intra-district transfers there are. The cohort change factor indicates the change in the number of students for each grade compared to the number of students in the prior grade the previous year.

These projections assume the transfers between schools remain consistent. If changes in facilities, schedules, programs or policies are made, then the patterns may be impacted.

El Dorado Union High School District
2022/23 Demographics and Enrollment Projections

SCHOOL FACILITY UTILIZATION

The following chart shows the current and projected utilization rates for each school. It has been color coded with blue representing schools with a utilization rate of under 70%, yellow representing a utilization rate of at least 70% but under 80% and red for the schools that have over 100% utilization. The utilization indicates the long term impacts of the changes in enrollment as compared to the school capacities.

School Facility Utilization			2022/23	2028/29	2022/23	2028/29
	Net	Net CR	Current	Projected	Current	Projected
<u>High Schools</u>	<u>Classrooms</u>	<u>Capacity</u>	<u>Enrollment</u>	<u>Enrollment</u>	<u>Utilization</u>	<u>Utilization</u>
El Dorado High	57	1,568	1,224	1,188	78.1%	75.8%
Oak Ridge High	92	2,530	2,517	2,143	99.5%	84.7%
Ponderosa High	83	2,283	1,652	1,626	72.4%	71.2%
Union Mine High	54	1,485	1,066	1,001	71.8%	67.4%
Sub-Totals	286	7,866	6,459	5,958	82.1%	75.7%
 <u>Other Schools</u>						
Independence High	9	225	126	114		
Pacific Crest Academy	13	325	99	92		
Non Public School	0	0	35	32		
Sub-Totals	22	550	260	238		
 District Totals	 308	 8,416	 6,719	 6,196	 79.8%	 73.6%

For 2022, the school with the highest percentage of available space is Union Mine High and the school that is impacted the most is Oak Ridge High.

El Dorado Union High School District 2022/23 Demographics and Enrollment Projections

The color-coded map below shows the projected utilization for the high schools.

